

CENTER FOR ADVANCING  
**HEALTHY**  
COMMUNITIES



NATIONAL ASSOCIATION OF  
**CHRONIC DISEASE DIRECTORS**  
Promoting Health. Preventing Disease.

# Supports to Advance Emotional Well-Being in Schools Learning Collaborative Cohort

---

## State Leaders Bi-Monthly Call

---

April 17, 2024  
12:00 – 1:00 p.m. ET

The *National Initiative to Advance Health Equity in K-12 Education by Preventing Chronic Disease and Promoting Healthy Behaviors* project is supported by the Centers for Disease Control and prevention (CDC) of the U.S. Department of Health and Human Services (HHS). The contents are those of the authors and do not necessarily represent the official views of, nor an endorsement by, CDC/HHS or the U.S. Government.



# Call Objectives

---

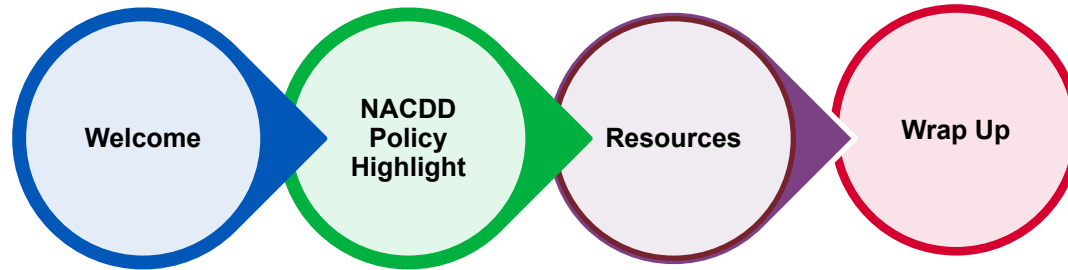
By the end of the meeting, participants will be able to:

- Describe the broader political context surrounding social-emotional learning and its influence on policy discourse
- Summarize federal and state legislative efforts to facilitate or impede social-emotional learning
- Identify resources, tools, and support for engaging in your policy work



# Agenda

---





---

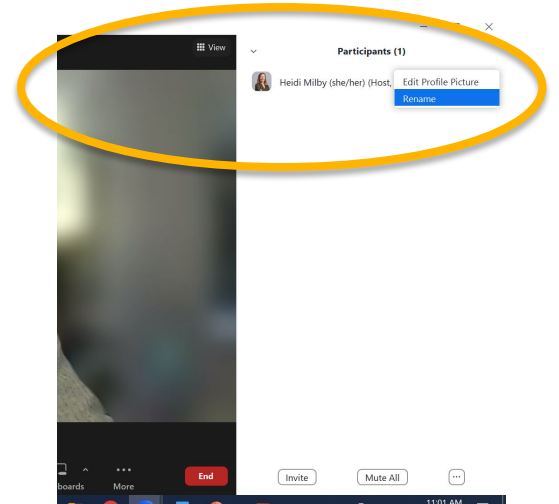
# Welcome

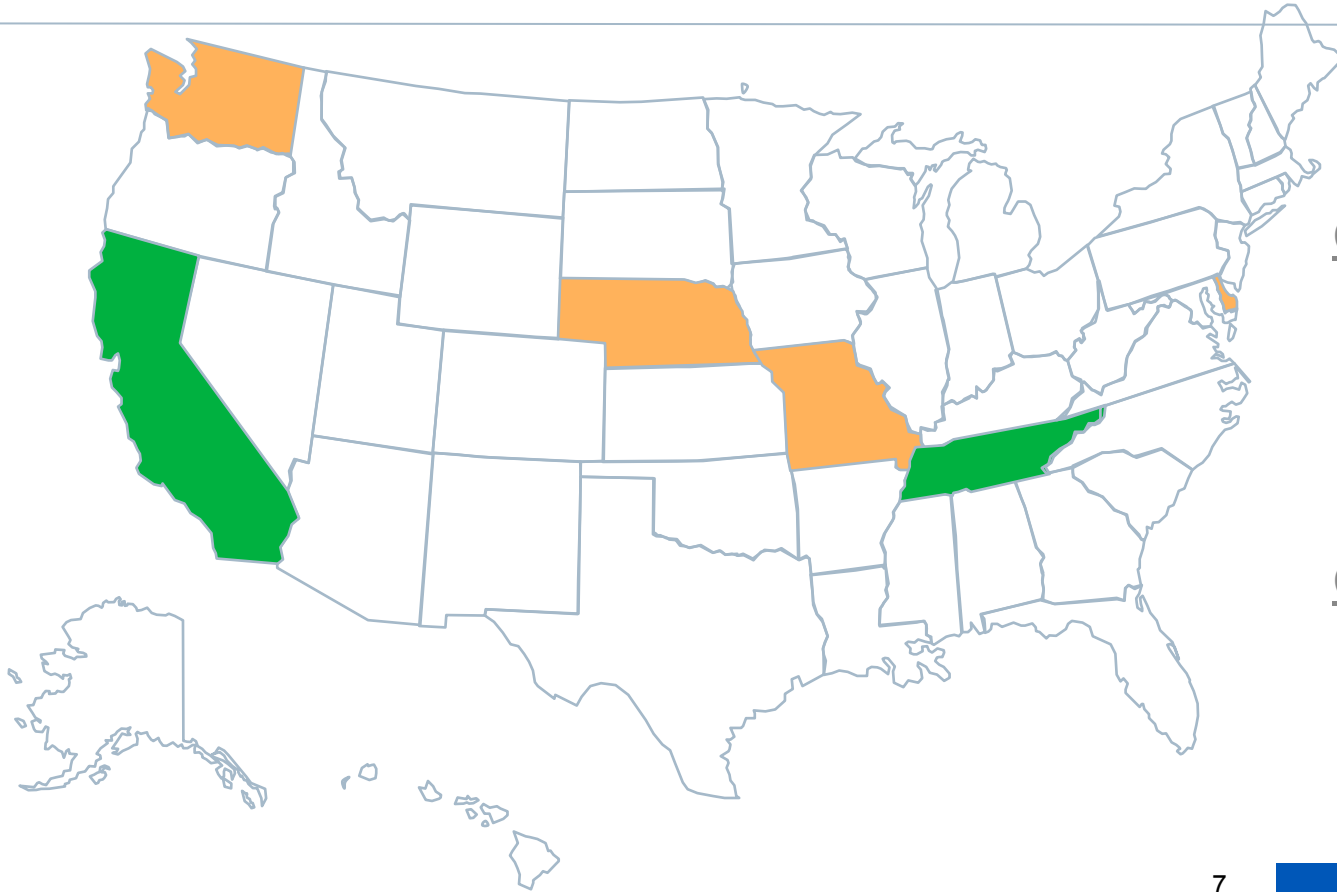
---

# Zoom Name

- To change your Zoom name, click on:
  - Participants
  - Click on 3 dots
  - Rename

*NAME (preferred pronouns),  
ORGANIZATION*





## Cohort 1

- Delaware
- Missouri
- Nebraska
- Washington

## Cohort 2

- California
- Tennessee



# Introductions

---

- 1) Name
- 2) Role
- 3) Organization
- 4) Reflect on something that brought you joy recently





---

# Spotlight: NACDD Policy Team

---

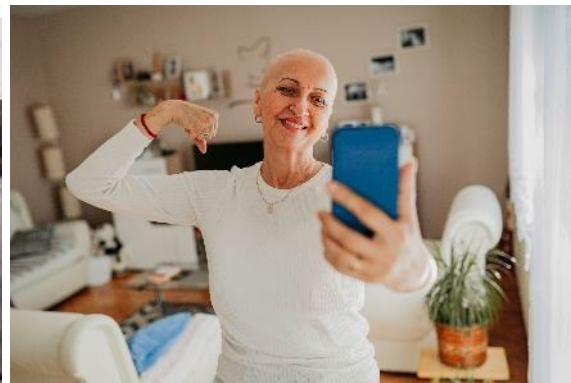
# School Health Policy



NATIONAL ASSOCIATION OF  
**CHRONIC DISEASE DIRECTORS**  
Promoting Health. Preventing Disease.

NACDD's Center for Health Policy improves the overall health of the population by making the prevention of chronic diseases a policy priority.

- **Bringing more attention** to the devastating impact of chronic diseases and how they can be prevented.
- **Using policy as a lever** to shape better population health.
- **Moving upstream** to address root causes of health.



# Who We Serve



STAFF/CONSULTANTS



POLICYMAKERS



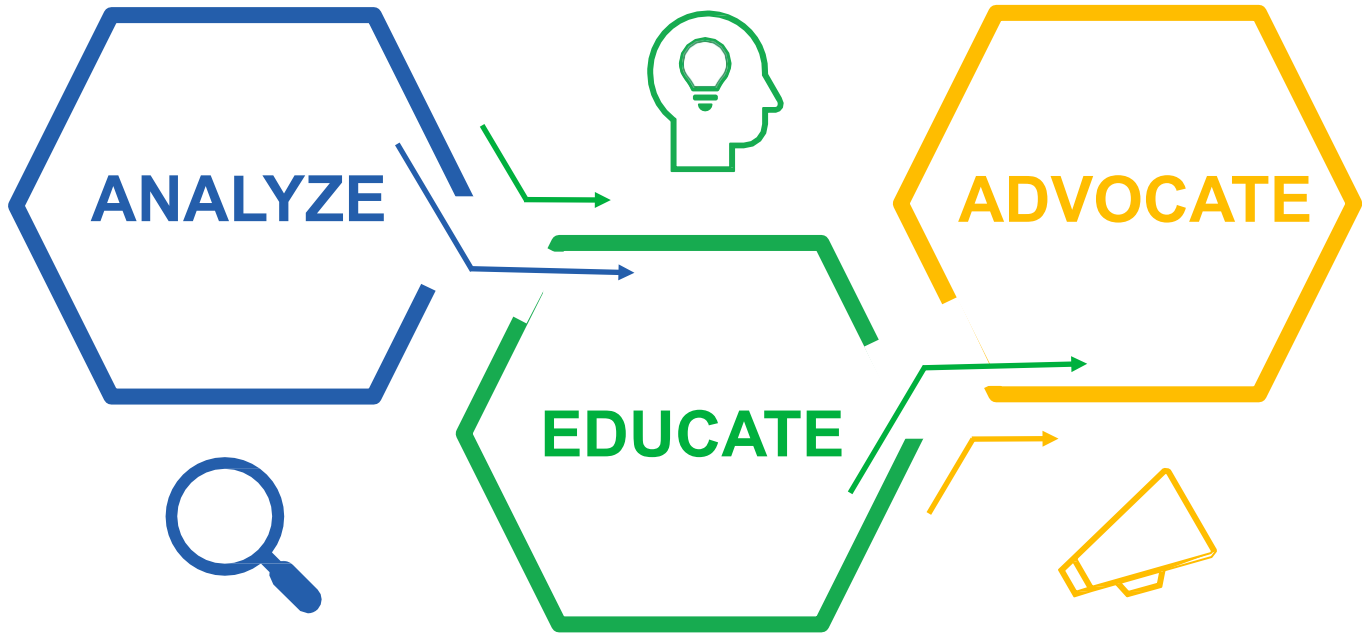
PARTNERS



MEMBERS



# What We Do





# FEDERAL EDUCATION POLICY



# Federal Government's Role



- Setting requirements



- Funding
- Carrot v. stick



- Agency oversight and requirements



# Congress and SEL

## Examples from the 117<sup>th</sup> Congress (2021-2022):

117<sup>TH</sup> CONGRESS  
1<sup>ST</sup> SESSION

### S. 1668

To establish a competitive grant program to support the development, implementation, and evaluation of successful educator and school leader professional development programs on family engagement that will increase the capacity of educators and school leaders to work with families to develop and support the **social-emotional learning** of children.

117<sup>TH</sup> CONGRESS  
1<sup>ST</sup> SESSION

### H. R. 5337

To establish a National social emotional learning clearinghouse.





# **FEDERAL POLICY ADDRESSING OTHER WSCC COMPONENTS**

# Physical Activity



**Requirements for the PA guidelines**



**Tax policy**



**Additional funding/grant programs**

# Federal Legislation

## **Promoting Physical Activity for Americans Act**

Requires the Department of Health and Human Services (HHS) to continue issuing at least every 10 years physical-activity guidelines.

## **Reducing Obesity in Youth Act of 2023**

Requires the Centers for Disease Control and Prevention, in coordination with the Administration for Children and Families, to award grants to promote healthy eating and physical activity and address food insecurity among children in early care and education settings.

# Federal Legislation

## **PHIT Act of 2023**

Allows a medical care tax deduction for up to \$1,000 (\$2,000 for a joint return or a head of household) of qualified sports and fitness expenses per year.

## **PLAY Act of 2023**

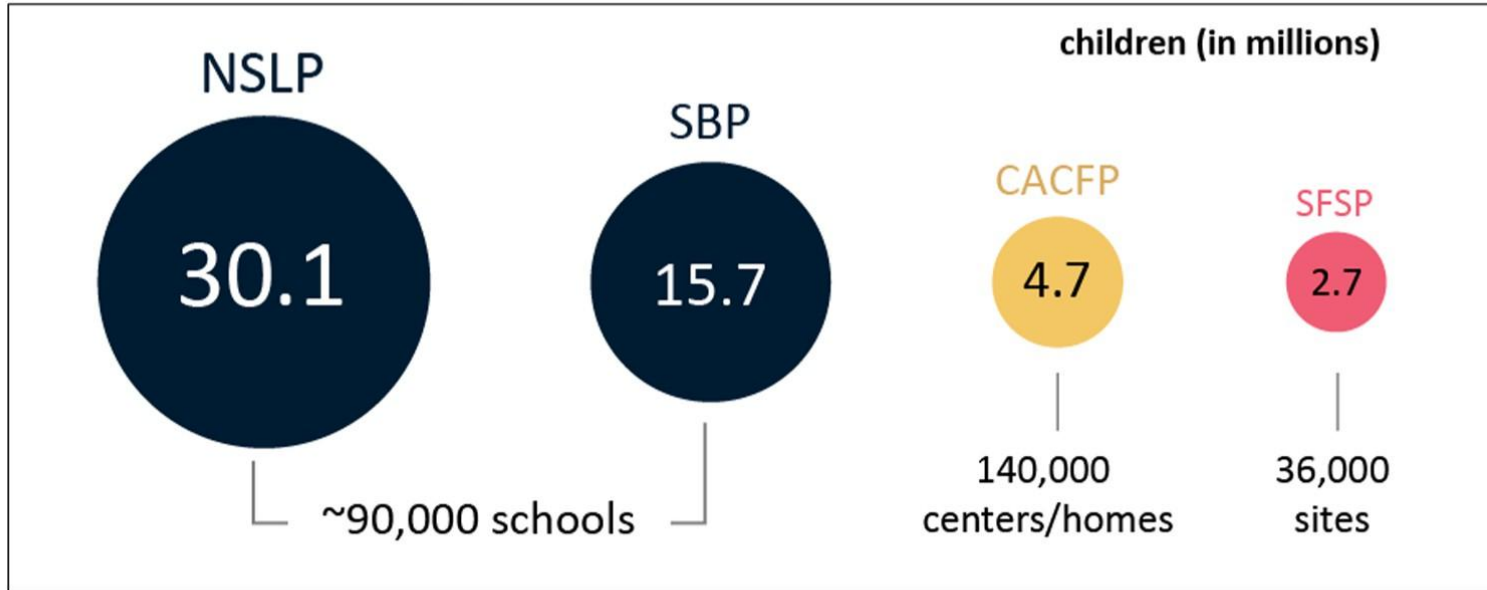
Modifies the child and dependent care tax credit to cover expenses for youth physical activities and increases the maximum dollar amount for dependent care flexible spending arrangements.

# School Nutrition

- National School Lunch Program (NSLP)
- School Breakfast Program (SBP)
- Child and Adult Care Food Program (CACFP)
- Summer Food Service Program (SFSP)
- Seamless Summer Option (SSO)
- Summer Electronic Benefit Transfer for Children (Summer EBT) Program
- Fresh Fruit and Vegetable Program (FFVP)
- Special Milk Program (SMP)

# School Nutrition

**Selected Child Nutrition Programs: Estimated Participants and Meal Sites, FY2022**



**Source:** CRS, based on USDA-FNS, “June 2023 Keydata Report,” September 8, 2023.

**Notes:** Numbers are rounded. FY2022 data are preliminary.



# STATE POLICY ADDRESSING SEL



# State Legislation

State  
**CA**

Bill Number  
**AB 3010**

Last Action  
**From Committee Chair With Authors  
Amendments Amend And Re Refer To  
Com On Ed Read Second Time And  
Amended 2024 03 21**

Status  
**In Assembly**

## Title

Pupil instruction: social and emotional skills.

**Bill Summary:** Last edited by Zach Harris at Mar 25, 2024, 1:08 PM

This bill would, commencing with the 2027-28 school year, add social and emotional skills to the adopted course of study for grades 1 through 12.





# State Legislation

State  
**WA**

Bill Number  
**HB 2239**

Last Action  
**By Resolution Returned To House Rules  
Committee For Third Reading 2024 03  
07**

Status  
**Failed sine die**

## Title

Supporting student well-being through instruction in social-emotional skills.

**Bill Summary:** Last edited by Zach Harris at Mar 25, 2024, 4:36 PM

Every school district and public school is encouraged to provide instruction on skills that promote social, emotional, behavioral, and mental health and wellness inclusive of self-awareness, self-management, self-efficacy, social awareness, social management, and social engagement consistent with learning standards and benchmarks adopted by the office of the superintendent of public instruction. It is recommended that any curriculum used to provide instruction in accordance with this section is research-based or evidence-based, developmentally appropriate, linguistically responsive, and culturally sustaining, incorporates elements of universal design, and promotes and supports student learning, mental health, and well-being.



# **STATE POLICY ADDRESSING OTHER WSCC COMPONENTS**



# Key Physical Activity Policies

**Schools/ECE**

**Parks and recreation**

**Land use/community development**

**Crime/safety**

**Transportation**



# Key Nutrition Policies

**Funding for school meals**

**~~Universal free meals~~**

**~~Food safety guidelines~~**

**Procurement/healthy foods**



# Policies Affecting Schools AND ECE

**Health education**

**Unstructured playtime**

**PE requirements**

**Foods and beverages served**



# **SEL AS A POLITICAL HOT TOPIC**



# In 'social-emotional learning,' right sees more critical race theory

How 'Social and Emotional Learning' Became the Newest Battleground in the Classroom Wars

**Senator proposes bill that would prohibit social-emotional learning in Oklahoma schools**

Conservative activists call 'social emotional learning' a Trojan horse for critical race theory

**Teaching social-emotional learning is under attack**

Bills in at least eight states have sought to ban or limit SEL, and some parents around the country are also rallying against it

***A Look Inside the Textbooks That Florida Rejected***

**I Just Want My Kid to Learn Algebra.  
Does That Make Me a Culture  
Warrior?**



**CENTERS FOR DISEASE CONTROL AND PREVENTION**  
**FY 2025 President's Budget**  
(Dollars in Thousands)

	FY 2023	FY 2024	FY 2025	
	Final Level	CR Level	President's Budget	+/- FY23 Final Level
<b>Chronic Disease Prevention and Health Promotion</b>	\$1,430,414	\$1,430,414	\$1,55G,414	\$12G,000
<b>Chronic Disease Prevention and Health Promotion - BA</b>	\$1,175,464	\$1,175,464	\$1,304,464	\$12G,000
<b>Chronic Disease Prevention and Health Promotion - PPHF</b>	\$254,G50	\$254,G50	\$254,G50	\$0
-- Tobacco (BA+PPHF)	\$246,500	\$246,500	\$256,500	\$10,000
-- School Health	\$19,400	\$19,400	\$38,400	\$19,000
-- Cancer Prevention and Control	\$409,549	\$409,549	\$499,549	\$90,000
-- Breast and Cervical Cancer	\$235,500	\$235,500	\$280,500	\$45,000
-- Cancer Registries	\$53,440	\$53,440	\$78,440	\$25,000
-- Colorectal Cancer	\$44,294	\$44,294	\$64,294	\$20,000
-- Safe Motherhood/Infant Health	\$108,000	\$108,000	\$118,000	\$10,000





# HOW YOU CAN GET INVOLVED



# Education, Advocacy, and Lobbying

## Education

**Giving just the facts** – data, people served, evidence of effectiveness, and accomplishments

## Advocacy

**Expressing general support for an issue** – breast cancer prevention vs. specific screening requirements

## Lobbying

**Communicating a clear preference about proposed or pending legislation** – includes encouraging others to express their support/opposition.

# Using Research and Data to Inform the Policy Process



## What can I do to raise awareness?



- Engage with policymakers
- Utilize the media to inform policymakers and the public
- Maximize relationships with partners and coalitions



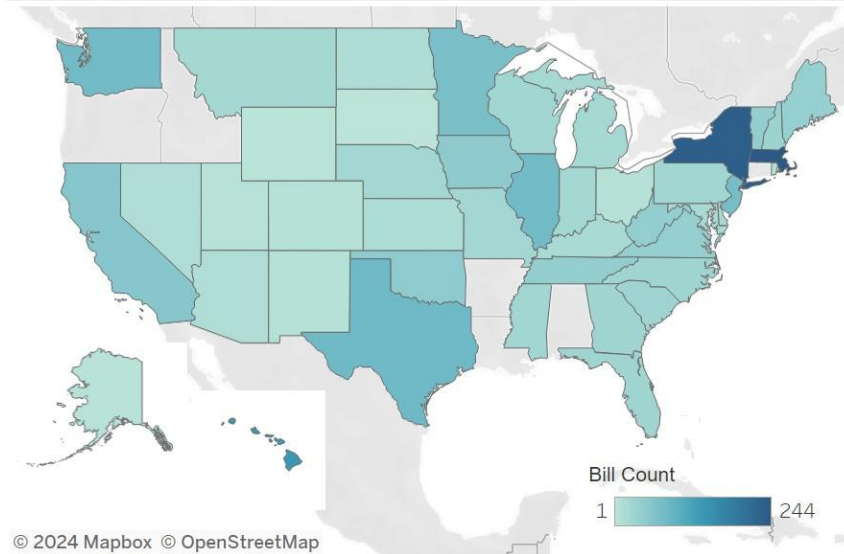
# HOW CAN NACDD SUPPORT YOU?



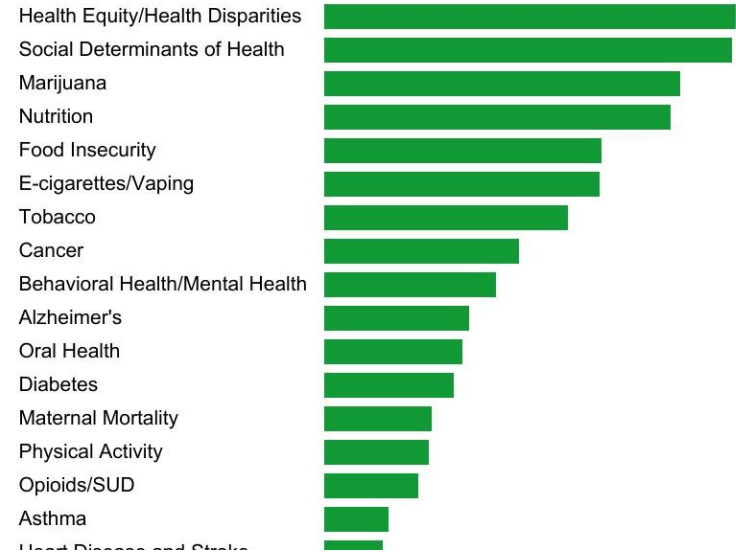
# State Legislative Tracking

## NACDD Legislative Tracker

Select a state to filter by legislature



Select a bar to filter by issue area





# Questions?

[lruth@chronicdisease.org](mailto:lruth@chronicdisease.org)



---

# Resources & Support

---

## **Addressing The Youth Mental Health Crisis: The Urgent Need For More Education, Services, And Supports (Mental Health America)**

<https://mhanational.org/addressing-youth-mental-health-crisis-urgent-need-more-education-services-and-supports>

An analysis of three primary categories of school mental health policies, supplemented by extensive appendices containing policy research and resources

## **Opportunities and Challenges in Advancing State Legislation To Promote Mental Health Education and Social Emotional Learning in Schools (Mental Health America)**

<https://mhanational.org/qa-mha-affiliates-opportunities-and-challenges-advancing-state-legislation-promote-mental-health>

A Q&A/Issue Brief on SEL vs. Mental Health Education



## **2023 School Mental Health State Legislative Guide (Hopeful Futures)**

<https://www.inseparable.us/wp-content/uploads/2023/08/HopefulFuturesCampaign-2023SMHStateLegGuide.pdf>

Outlines policy recommendations for state legislators to enhance school mental health services, financing, and prevention and early intervention strategies

## **State Policy Opportunities to Advance Comprehensive School Mental Health Systems (Healthy Schools Campaign & Mental Health America)**

[https://healthyschoolscampaign.org/dev/wp-content/uploads/2022/10/State-Policy-Opportunities-to-Advance-Comprehensive-School-Mental-Health-Systems\\_.pdf](https://healthyschoolscampaign.org/dev/wp-content/uploads/2022/10/State-Policy-Opportunities-to-Advance-Comprehensive-School-Mental-Health-Systems_.pdf)

Offers a detailed framework and policy recommendations for state leaders looking to develop or enhance comprehensive school mental health systems, including strategic insights



## Youth Election Town Hall

Tuesday, April 23 | 6 - 7pm ET | 3 - 4pm PT

In today's whirlwind of political noise, it's easy to feel overwhelmed or doubt the weight of our votes. This youth-led town hall is a rallying point for young voters to cut through the chaos, understand elections, and see their real-life impact.

<https://mhanational.org/youth-election-town-hall>

## Vote Like Your Mental Health Depends On It: 2024 Mental Health Voter Guide (Mental Health America)

<https://mhanational.org/2024-voter-guide>

This guide provides information and tools for:

- Voter registration
- Voting rights
- Making an elections action plan
- Questions to ask candidates
- Writing a letter to the editor
- Understanding major party platforms
- Sharing on social media
- Caring for your mental health
- And more!



May is Mental Health Awareness Month, and recent data from the Centers for Disease Control and Prevention's (CDC) [Adolescent Behaviors and Experiences Survey](#) (ABES) highlight the need to focus on [youth suicide prevention](#). According to ABES data, 9 percent of youth reported a suicide attempt in 2021. Due in part to experiences of [racial and ethnic discrimination and victimization](#), the percentage of youth reporting a suicide attempt was highest among American Indian and Alaska Native youth (20%), followed by youth who identify as multiple races (12%) and Black (10%). The percentage of lesbian, gay, and bisexual (LGB) youth reporting a suicide attempt was more than five times higher than among heterosexual youth (26% vs. 5%).

These findings suggest an opening for state-level policies to address youth suicide prevention. Below, we summarize major themes from recently enacted or proposed bills on this topic from state legislatures. Notably, several bills call for raising awareness about the new 988 [national suicide prevention hotline](#), which launches July 16, 2022.

### **Raising awareness of suicide hotlines among students and staff**

- Louisiana [SB356](#) would encourage schools to prominently display the national suicide prevention hotline number in locations throughout the school, including in the main office, the teacher's lounge, and the office of each counselor.
- The recently enacted [SB1307](#) in Oklahoma and [SB2510](#) in Tennessee require that suicide hotlines be added to student identification cards. If enacted, the proposed Iowa [SF2075](#), Missouri [HB2136](#), and New York [A9692](#) would also require student identification cards to include suicide hotlines.

### **Setting curricular (and extra-curricular) expectations on suicide prevention**

- Massachusetts [H617](#) and Louisiana [HB495](#) would require that students in grades 6 through 12 receive at least one hour of training in suicide prevention and one hour of training in student safety and violence and social isolation prevention. Both bills would encourage schools to designate a student-led club, open to all students, that promotes suicide prevention and social inclusion strategies.
- New Jersey [A3551](#) would expand current requirements to provide instruction on suicide prevention to also include training on how mental health relates to suicide prevention. The proposed legislation also specifies that such instruction should be provided to K-12 students.



---

# Wrap Up

---

Please take a few minutes to complete a  
brief evaluation for this call:

[https://chronicdisease.zoom.us/survey/qJNwaoqw- C7QOs9SbEFeKL0qv2p3wdfkpdaB1jHynYS01RtGyg.SsqzXp62tQ7T1Yz4/view?id=N\\_Egqc9RQN6YuW71gQf3pQ#/sharePreview](https://chronicdisease.zoom.us/survey/qJNwaoqw-C7QOs9SbEFeKL0qv2p3wdfkpdaB1jHynYS01RtGyg.SsqzXp62tQ7T1Yz4/view?id=N_Egqc9RQN6YuW71gQf3pQ#/sharePreview)



# End of Project Survey

---

Please complete by May 10th, 2024.

Keep an eye out for an email with more details this week!

[https://nacdd.sjc1.qualtrics.com/jfe/form/SV\\_cArUuqJCgzvTloe](https://nacdd.sjc1.qualtrics.com/jfe/form/SV_cArUuqJCgzvTloe)

# Focus Group

---

Child Trends will be conducting focus groups with State agency participants to better understand your efforts and experiences with professional development and technical assistance in the Learning Collaborative Cohort. The information shared in focus groups will be confidential and will help inform PD and TA in the future.

Please fill out this poll to help identify a time to schedule focus groups.  
Thank you for your participation!

[https://forms.office.com/Pages/ResponsePage.aspx?id=j20MOOPcR0e1\\_aZWBQv9f6VmtXLtHBBDr6DXwOwEmPpURFE5NkNRQ0hNNDVWVUhFQ1Y1OTVFS09aNC4u](https://forms.office.com/Pages/ResponsePage.aspx?id=j20MOOPcR0e1_aZWBQv9f6VmtXLtHBBDr6DXwOwEmPpURFE5NkNRQ0hNNDVWVUhFQ1Y1OTVFS09aNC4u)

# Partner Event: Mental Health America

---



LIVE WEBINAR

## MEETING YOUTH WHERE THEY ARE: PREVENTION PROGRAMMING TO SUPPORT MENTAL HEALTH

Thursday, April 18

1:00 PM ET | 10:00 AM PT

*This is a SAMHSA-sponsored webinar.  
Live closed-captioning and ASL interpreters  
will be available for this webinar.*



tio





---

# Thank you!

---

# NACDD Contacts

---



Heidi Milby, MPH  
Associate Director  
NACDD, Center for Advancing Healthy Communities  
[hmilby@chronicdisease.org](mailto:hmilby@chronicdisease.org)



Ashley Krombach  
Public Health Consultant  
NACDD, Center for Advancing Healthy Communities  
[akrombach\\_ic@chronicdisease.org](mailto:akrombach_ic@chronicdisease.org)