

Resources on Cancer Screening and Control

Fact Sheets

- [What Works Fact Sheet on Cancer Screening](#)
- [Increasing Appropriate Colorectal Cancer Screening: Interventions Engaging Community Health Workers](#)
- [Increasing Cancer Screening: Multicomponent Interventions – Colorectal Cancer](#)

Success Stories from Community Guide in Action

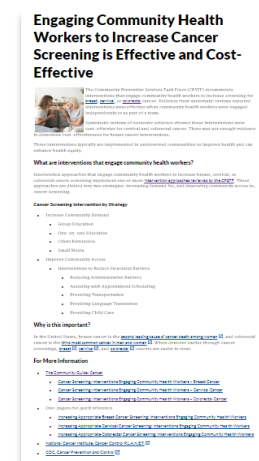
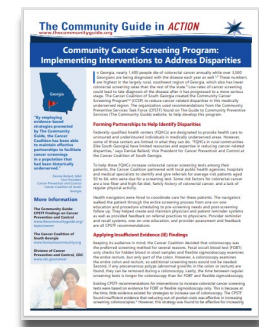
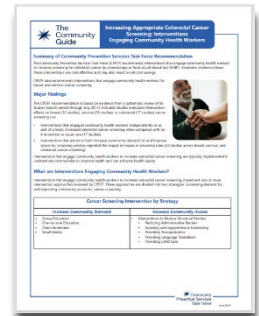
- [South Georgia Cancer Screening Program](#)
- [Health Centers Increase Colorectal Cancer Screening](#)
- [Cancer Screening in New York State](#)
- [Increasing Employee Cancer Screening](#)
- [Partnering for Employee Health in Washington](#)

Summaries of CPSTF Findings on Colorectal Cancer

- [Interventions Engaging Community Health Workers](#)
- [Multicomponent Interventions](#)
- [Client Reminders to Increase Screening](#)
- [One-on-One Education for Clients to Increase Screening](#)
- [Reducing Structural Barriers for Clients to Increase Screening](#)
- [Using Small Media to Inform and Motivate Clients to Increase Screening](#)
- [Provider Assessment and Feedback](#)

For More on This Topic

- [CDC, National Center for Health Statistics](#)
- [Healthy People 2030](#)
- [National Cancer Institute](#)
- [American Cancer Society](#)



Collaborations

- [Evidence-Based Intervention Planning Guides](#), developed by CDC's Division of Cancer Prevention and Control
 - These planning guides provide tips to **help clinic staff implement the following CPSTF recommendations to increase screening for breast, cervical, and colorectal cancer**: client reminders, reducing structural barriers, provider reminders, provider assessment and feedback.
 - Each planning guide includes a process flow diagram of the intervention theory; process evaluation metrics, outputs, and example measures; a list of resources needed to support implementation, such as partnerships, staff, and tools; lessons learned from studies included the Community Guide systematic reviews; and intervention components.
- [Increasing Colorectal Cancer Screening and Promoting Screening Quality: An Action Guide for Engaging Employers and Professional Medical Organizations](#), developed by CDC's Division of Cancer Prevention and Control
- [Increasing Colorectal Cancer Screening: An Action Guide for Working with Health Systems](#), developed by CDC's Division of Cancer Prevention and Control
- [Health Systems Improvement Toolkit: A Guide to Cancer Screening in Indian Country](#), developed in collaboration between CDC's Division of Cancer Prevention and Control and the National Indian Health Board
 - This toolkit was developed to share best practices from American Indian and Alaska Native funded programs implementing CPSTF-recommended interventions—specifically in Tribal health systems working to increase high-quality, population-based breast, cervical, and colorectal cancer screenings.

About CPSTF Findings

- The [Community Preventive Services Task Force](#) (CPSTF) bases its findings and recommendations on systematic reviews of the scientific literature. With oversight from CPSTF, scientists and subject matter experts from the Centers for Disease Control and Prevention conduct these reviews in collaboration with a wide range of government, academic, policy, and practice-based partners.
- Visit the [Community Guide Methodology](#) page on [The Community Guide](#) website for more information about the methods used to conduct the systematic reviews and the criteria CPSTF uses to make findings and recommendations.