



# CDC CRCCP NEWSLETTER

ISSUE 1 • MARCH 2021



## THANK YOU FOR YOUR PARTNERSHIP

Without your commitment to this program, our goal of decreasing the disproportionately high burden of CRC-specific mortality among minority and rural populations would not be possible.

By expanding effective evidence-based interventions (EBIs), we will work together to overcome system-, provider- and patient-level barriers.

We look forward to improving your CRC screening rates, in a sustainable way.

### TABLE OF CONTENTS

Cohort 1 Announcement • P. 2

Who is the TC3? • P. 2

Research Developments • P. 3

Wear Blue for CRC • P. 3

Upcoming Events • P. 4

Reminders & Contact • P. 4

# Meet and Greet

We would love to introduce you to the faculty and staff who are working on this project. Take a moment to review our team directory.



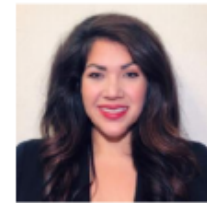
**Maria Fernandez, PhD**  
UTHealth Houston, Professor  
Program Lead Investigator

Hobby: I enjoy flamenco dancing



**Allison Rosen, MS**  
UTHealth Houston  
Project Director

Fun Fact: I love to country-western dance.



**Gabrielle Frachiseur, CHES**  
UTHealth Tyler,  
Program Coordinator

Fun Fact: I enjoy painting and spending time with my children.



**Susan H. Fenton, PhD, RHIA, FAHIMA**  
UTHealth, School of Biomedical Informatics,  
Faculty Director- Gulf Coast Regional  
Extension Center  
EHR Implementation and Support Lead

Hobby: Spending time with family, reading and hiking.



**Deevakar Rogith, MBBS, PhD**  
UTHealth School of Biomedical Informatics,  
Assistant Professor, Lead Developer

Hobby: I use data and tech to automate most activities of daily life.



**Alexa Poole**  
Gulf Coast Regional Extension  
Center, Health IT Consultant

Fun Fact: I have newborn identical twin girls.



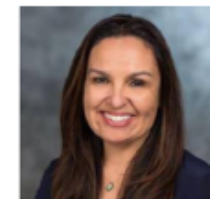
**Lara Savas, PhD**  
UTHealth Houston, Associate Professor  
Evaluation Team

Fun Fact: I plan to visit Jupiter for my next vacation.



**Bijal A Balasubramanian, MBBS, PhD**  
UTHealth Dallas, Associate Professor,  
Implementation Team

Fun Fact: I collect art from my world travels.



**Melissa Valerio-Shewmaker, PhD, MPH**  
UTHealth Brownsville, Associate  
Professor, Implementation  
Team

Hobby: I enjoy offshore fishing.



**Lewis E. Foxhall, MD**  
MD Anderson Cancer Center, VP, Health  
Policy,  
Ofc. of Chief Medical Officer  
Program Co-Lead

Fun Fact: I teach origami classes.



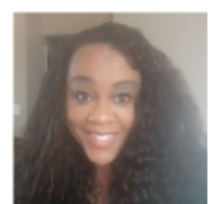
**Charles E. Amos, Jr., DrPH**  
MD Anderson Cancer Center, Program  
Manager- Project ECHO

Fun Fact: I skydive every Saturday.



**Sonia Gilmore, MS**  
MD Anderson Cancer Center,  
Program Manager

Hobby: I draw chibis and anime.



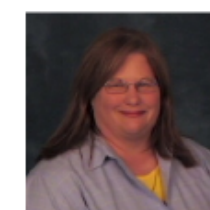
**Gloria Robinson**  
American Cancer Society  
Cancer Control Strategic Partnerships  
Manager

Fun Fact: I was born the same day, same year, three hours apart from my coworker.



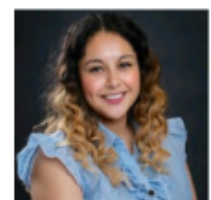
**Tracy Swoboda**  
Gulf Coast Regional Extension Center,  
Quality Improvement Advisor II

Fun Fact: I thrive on sunshine. I loathe cold salads and temperatures lower than 70 degrees.



**Sheila Banyai**  
Gulf Coast Regional Extension  
Center, Security Consultant

Fun Fact: I served 20 years in the US Navy.



**Crystal Costa, MPH**  
UTHealth Houston, Graduate Research  
Assistant

Fun Fact: I once had a pet chameleon.



**Lynn Ibekwe, PhD, MPH**  
UTHealth Houston, Predoctoral  
Investigator  
Implementation Team

Fun Fact: I'm first generation Nigerian-American.



**Tim Walker, PhD**  
UTHealth Houston, Assistant  
Professor  
Readiness Assessment

Fun Fact: I have 3 young daughters who keep me very busy.



**Paul McGaha, DO**  
UTHealth Tyler, Associate Professor  
Program Co-Lead

Fun Fact: I can juggle swords.



**Carlton Allen, MS, CHW, CHES**  
UTHealth Tyler, Program Director

Fun Fact: I was born and raised in Michigan, and I like to run.



**Amanda S. English, MPH, MCHES**  
UTHealth Houston,  
Program Manager

Fun Fact: I love to travel, read and watch baseball.



# THE TEXAS COLORECTAL CANCER CONSORTIUM: TC3



- **The University of Texas Health Science Center at Houston (UTHealth)**
  - The UTHealth School of Public Health (UTSPH)
  - The School of Biomedical Informatics
    - The Gulf-Coast Regional Extension Center (UTSBMI/GCREC)
- **The University of Texas Health Science Center at Tyler (UTHSC-T)**
- **UT MD Anderson Cancer Center**

## COHORT 1 HAS BEGUN!

Cohort 1 featuring Coastal Health & Wellness and Genesis PrimeCare clinics, began earlier this month.



### Steps include:

1. The Clinic Readiness Assessment
2. Analysis of Assessment
3. Development of the Implementation Plan
4. Implement the Plan
5. Evaluate

Until your cohort begins this process, keep involved with program updates, and reach out to points of contact with any questions or concerns you may have.

# RESEARCH DEVELOPMENTS

## Why is colorectal cancer rising rapidly among young adults?

<https://www.cancer.gov/news-events/cancer-currents-blog/2020/colorectal-cancer-rising-younger-adults>

## Predicting colorectal cancer risk among average risk persons.

<https://medicalxpress.com/news/2020-11-colorectal-cancer-average-persons.html>

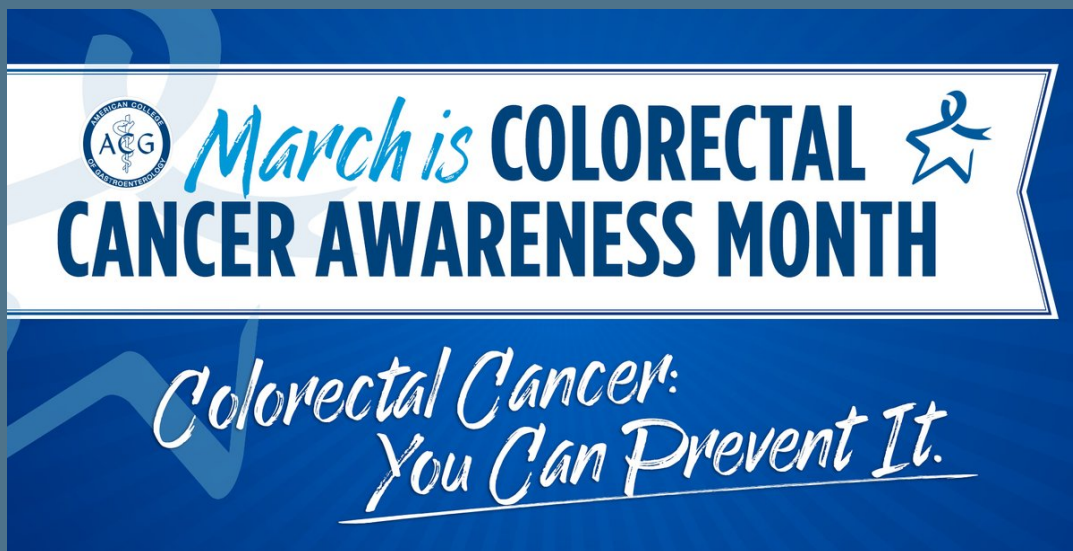
## National Coalition for Cancer Survivorship (NCCS) shares cancer survivors' perspectives on telehealth in cancer care.

<https://canceradvocacy.org/resources/telehealth/>

Do you have research or topics you would like to see featured in the next newsletter?

Submit your items via email to: [gabrielle.frachiseur@uthct.edu](mailto:gabrielle.frachiseur@uthct.edu)

# WEAR BLUE FOR CRC AWARENESS



Colorectal Cancer Awareness month has arrived!

We invite you to join us in promoting CRC awareness by wearing blue through the month of March.

Plan a day for clinic staff to wear blue and send us a picture for your chance to be featured in the next newsletter for recognition!

**If you post to social media, please use the hashtag #BlueForCRC**

# UPCOMING EVENTS

## American Cancer Society- Comprehensive Cancer Control

ACS South Region Continuing Education Series

- Session 2: Navigating Colorectal Cancer Screenings During COVID 19- March 16, 2021
- Session 3: Breast Health Equity and Screenings-May 2021

Registration Link:

[https://www.train.org/main/course/1096229/live\\_event](https://www.train.org/main/course/1096229/live_event)

## 2021 Prevent Cancer Dialogue Webcast Series

April 7: Innovations in Cancer Prevention

May 5: Innovations in Early Detection of Cancer

June 2: Progress and Challenges in Cancer Screening

Registration Link:

<https://2021preventcancerdialogue.vc.compartners.com/?bblinkid=248735395&bbemailid=29034355&bbejrid=1869299126>

## 2021 Southeastern Colorectal Cancer Consortium Virtual Meeting

July 21, 2021 from 1:00-4:00 PM ET.

Registration Link:

<https://app.mobilecause.com/f/2nng/n?vid=h4geq>

## KEY PROGRAM TERMS

### -Program Champions-

Individuals who serve as key promoters and communicators of the program, by supporting policies, systems and resources conducive to program success.

### -Evidence Based Interventions-

A continuum of practices proven or informed by research and evaluation, to overcome system-, provider- and patient-level barriers.

- Provider Assessment and Feedback
- Provider Reminders
- Patient Reminders
- Reducing Structural Barriers

<https://www.cdc.gov/screenoutcancer/ebi-planning-guides/index.htm>

## WEBINAR SPOTLIGHT



Join us to celebrate national achievements and to hear the latest state of the field updates that inform our work.

Date: Tuesday, March 16, 2021

Time: 3:00-4:00 PM ET

Register:

<https://nc crt.org/event/2021webcast/>

## PROGRAM CONTACTS

Program Lead Investigator: Maria Fernandez, PhD

### Gulf Coast

#### Program Director

Allison Rosen, MS

[allison.rosen@uth.tmc.edu](mailto:allison.rosen@uth.tmc.edu)

### East Texas

#### Program Coordinator

Gabrielle Frachiseur, CHES

[gabrielle.frachiseur@uthct.edu](mailto:gabrielle.frachiseur@uthct.edu)