

Georgia Breast and Cervical Cancer Program

NBCCEDP 30th Anniversary Meeting Exhibit Booth
Janet Shin, MPH / October 6-7, 2021



Presentation Overview

- Georgia Department of Public Health (DPH)
- History of Georgia Breast and Cervical Cancer Program (GA BCCP)
- Overview of GA BCCP
- GA BCCP Team
- Eligibility Requirements and Priority Populations
- Direct Clinical Services
- Women's Health Medicaid Program
- Patient Navigation
- Breast Cancer Genomics Program
- Health Systems Changes Interventions
- Worksite Cancer Screening Initiative

Georgia Department of Public Health (DPH)

- Mission:
 - Prevent disease, injury & disability
 - Promote health & well-being
 - Prepare for & respond to disasters
- DPH online: www.dph.ga.gov
- DPH on twitter: www.twitter.com/gaDPH
- DPH on facebook: www.facebook.com/GaDPH

History of Georgia Breast and Cervical Cancer Program (GA BCCCP)

- Breast and Cervical Cancer Mortality Prevention Act of 1990: established the CDC's National Breast and Cervical Cancer Early Detection Program (NBCCEDP).
- Georgia was funded in 1995.
- Breast and Cervical Cancer Prevention and Treatment Act of 2000: gave states the option to provide medical assistance through Medicaid to eligible women who were screened for and found to have breast or cervical cancer, including precancerous conditions, through the NBCCEDP.
- Currently, the NBCCEDP operates in all 50 states, the District of Columbia, 6 U.S. territories, and 13 American Indian/Alaska Native organizations and its amendments

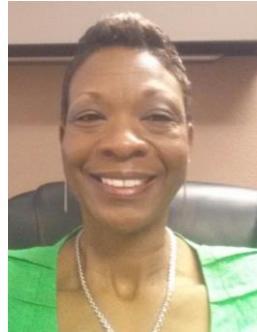
Overview of GA BCCP

- Implement statewide through contracts with 18 Public Health districts, 8 private providers, and GA Center for Oncology, Research and Education (GA CORE)
- Federal (CDC) and state funds
- Program components:
 - Direct clinical services:
 - Breast cancer screening: Mammogram, Clinical breast examination
 - Cervical cancer screening: Pap test, HPV test, Pelvic examination
 - Diagnostic testing of abnormal results
 - Referral for treatment if cancer is diagnosed
 - Patient navigation
 - Breast cancer genomics screening and testing
 - Health systems changes
 - Worksite cancer screening initiative

GA BCCP Team



Alissa Berzen,
Epidemiologist



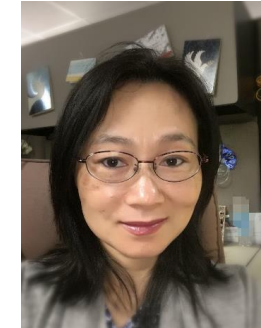
Janice Boyd,
Nurse Consultant



Melody Clark,
Administrative
Assistant



Janet English,
Nurse Consultant



Xinghua Liao,
Data Analyst



Kelly Little,
Business Operation
Support



Olga Lucia Jimenez,
Patient Navigation
Manager



Rebecca Mygrant,
Business Support
Analyst



Janet Shin,
Program Director



Darylsha Williams,
Business Operation
Support



Jierong Xu,
Data Manager



Tamika Rowe-Maloney,
Health System Manager
and Evaluator

Eligibility Requirements and Priority Populations

- Eligibility requirements:
 - Uninsured or underinsured
 - Georgia residents at or below 200% of federal poverty level
 - Biological female or transgender female
 - For breast cancer:
 - Women 40-64 years old
 - Women under 40 years old can be admitted for diagnostic testing if they are symptomatic
 - For cervical cancer: women 21-64 years old
- Priority populations: never or rarely screened women, populations experiencing high incidence and mortality rates, women with special needs

Direct Clinical Services

Measure	Calendar Year (CY) 2019 (1/1/2019 – 12/31/2019)	CY 2020 (1/1/2020 – 12/31/2020)
Served (received ≥ 1 breast or cervical cancer screening/ diagnostic services)	14,523	9,896
Received mammograms	12,810	8,693
Received Pap smears	5,245	3,372

Data source: GA BCCP data

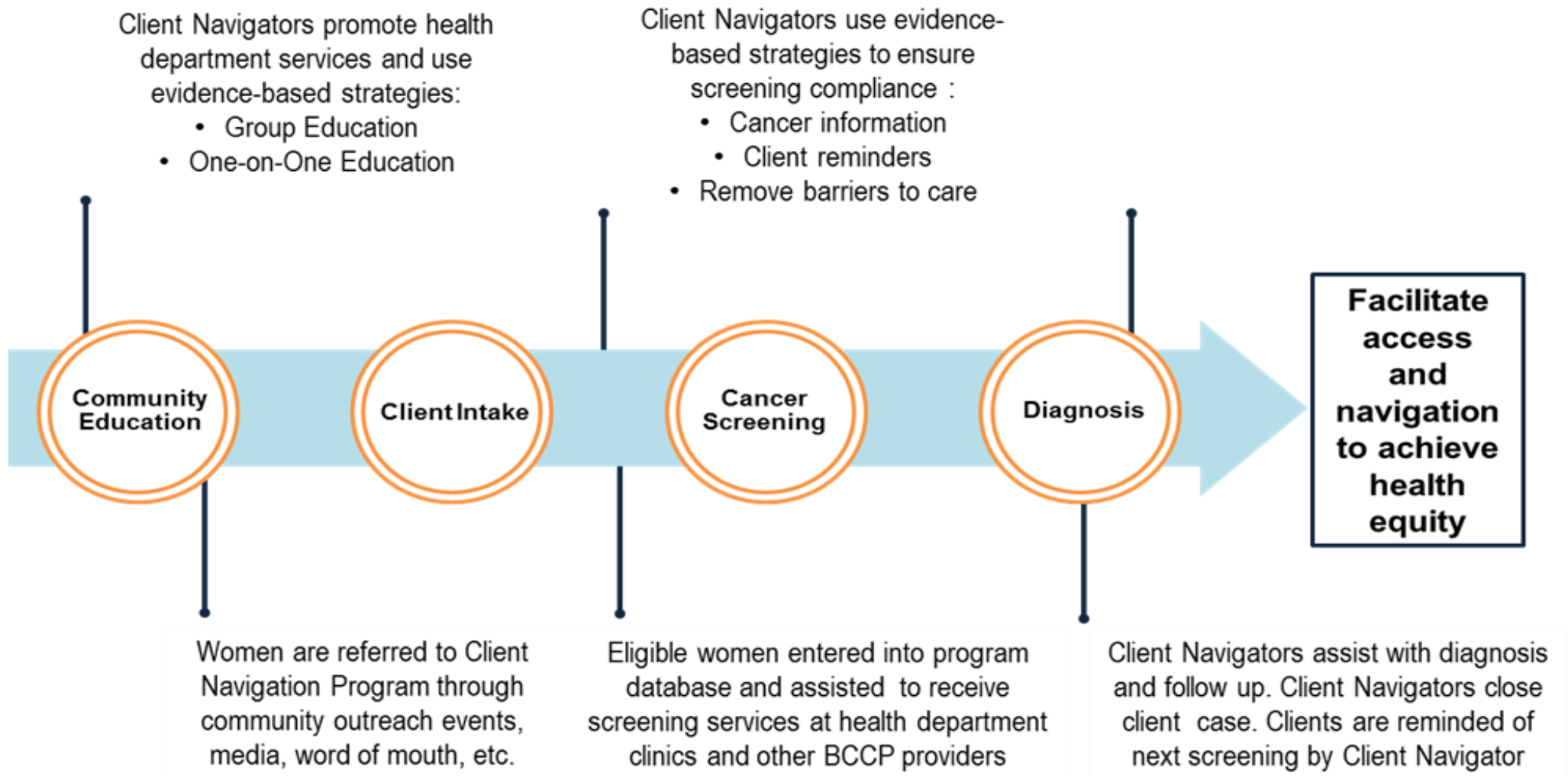
Services provided with CDC and state funds

Measurement period: 1/1/2019 – 12/31/2020

Women's Health Medicaid Program

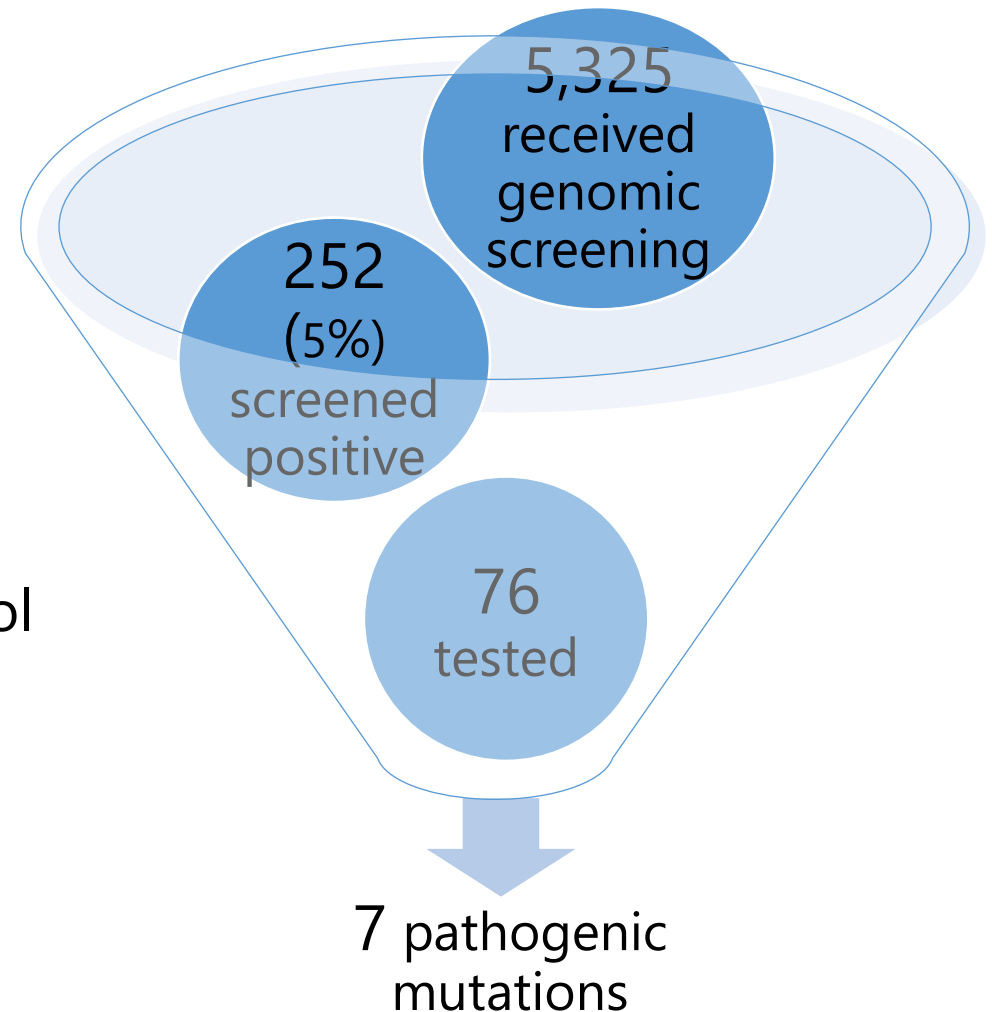
- Pay for cancer treatments for uninsured or underinsured women who have been diagnosed with breast or cervical cancer and cannot afford to pay for treatment
- Eligibility requirements:
 - Under 65 years old
 - Must be a U.S. citizen or lawfully admitted immigrant
 - Must be currently residing in Georgia
 - Must have breast or cervical cancer; may include precancerous conditions of the breast or cervix
 - Must be a biological woman or a transgender woman
 - Cannot be currently receiving Medicaid or Medicare except for Planning for Healthy Babies (P4HB) 180 and 181
 - Uninsured or underinsured and not receiving Medicare Part A or Part B regardless of age
 - Must be eligible for reconstruction and prostheses
 - Cooperating with 3rd party liability
 - Meet the income limit 200% Federal Poverty Level

Patient Navigation



Breast Cancer Genomics Program

- Implement through GA Center for Oncology, Research and Education (GA CORE) via contract for services
- Screen women at high risk for Hereditary Breast and Ovarian Cancer
- Breast Cancer Genetics Referral Screening Tool
<https://www.georgiacancerinfo.org/breast-cancer-gene-screen>



Data source: Breast Cancer Genetics Screening data
Measurement period: 1/1/2020 – 12/31/2020

Health Systems Changes Interventions



- Contracted with 4 Federally Qualified Health Centers (FQHCs)
- Conducted needs assessment
- Developed Health System Implementation Plan
- Established partnership with 1 additional health system & going through the contract development and review process



- Implemented ≥ 2 priority evidence-based interventions (EBIs)
 - Client reminder
 - Provider reminder
 - Provider assessment and feedback
 - Reducing structural barriers



- Collected and monitored baseline and annual clinic data
 - Clinic-level screening rate data
 - EBI implementation data
- Submitted clinic data to CDC

Worksite Cancer Screening Initiative

- Deliverables:
 - Administer employer-level and employee-level worksite assessments provided by GA BCCP
 - Collaborate with worksite staff to develop or enhance cancer screening policy at worksite
- In Year 4, North Health District partnered with a local daycare center and developed a paid time off policy to increase access to cancer screenings
- Participating Health Districts in Year 5: East Metro (3-4) and Athens (10)

Questions?

Janet Shin, M.P.H.

Breast and Cervical Cancer Program Director

Georgia Department of Public Health

Phone: 678-371-0045

Email: Janet.Shin@dph.ga.gov