

Breast Cancer Stats in Delaware

Breast cancer is the most commonly diagnosed cancer in Delaware.

- It is estimated that 990 new cases of breast cancer will be diagnosed in Delaware in 2021
- It is projected that 160 women will die from breast cancer in Delaware this year.
 - Only 75 percent of DE women are up-to-date with their mammography screening (<https://cancerstatisticscenter.cancer.org/#!/state/Delaware>)

AGE is a non-modifiable risk factor that increases a woman's chances of developing breast cancer.

In order to reduce the mortality of breast cancer among Delaware residents, it is important that **every eligible woman receives a breast cancer screening regularly**. Cancer screenings, such as mammograms, can find cancer early when the cancer is more treatable, which increases the likelihood of survival. Below are the current guidelines for mammograms according to the United States Preventive Task Force:

POPULATION	RECOMMENDATION	COST
Women 50 -74 years	Biennial (every other year) screening mammography	<ul style="list-style-type: none">• For health insurance plans that started on or after September 23, 2010, recommended screening tests are required to be covered under the Affordable Care Act.• Medicare Part B covers one baseline mammogram for women aged 35-39, screening mammograms annually for women age 40 and over, diagnostic mammograms more than once a year if medically necessary.• Medicare covers screening mammograms if the provider accepts the assignment. For a diagnostic mammogram, the cost is 20 percent of the Medicare-approved amount and the Part B deductible applies.
Women 40 – 49 years	Individual decision Women at a higher risk of breast cancer (women with a parent, sibling, or child with breast cancer) may benefit more than average-risk women from beginning screening in their 40s.	

If you don't have health insurance or if your health insurance doesn't cover cancer screenings, a **low cost or FREE screening test** may be available through the National Breast and Cervical Cancer Early Detection Program. To find out if you qualify, contact the Screening for Life program at **302-744-1040** or speak with your health care provider.

For a list of sites offering mammogram services within your county, see the map and location listing on the back of this flyer.

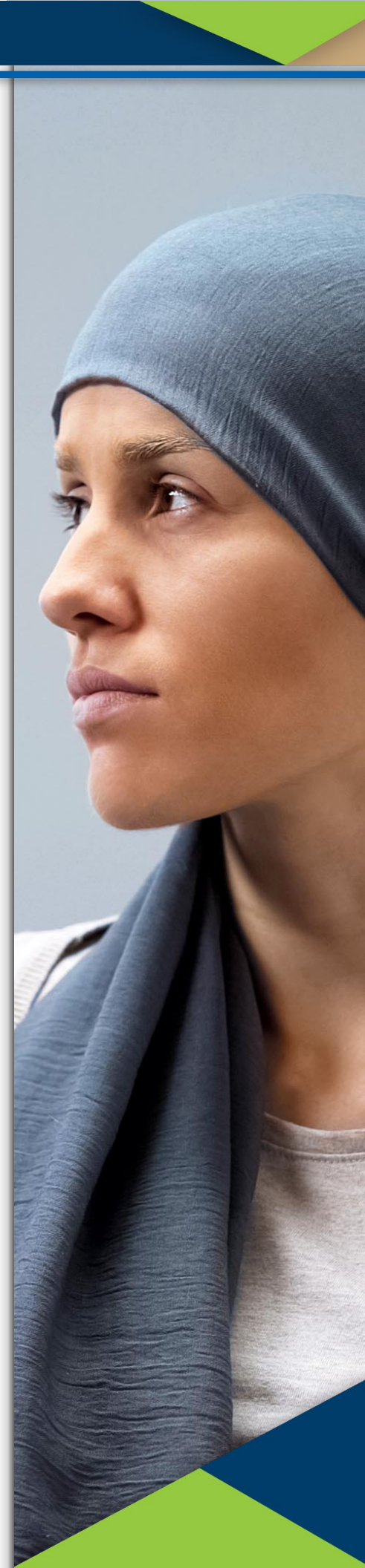
This publication was supported by the Cooperative Agreement Number NU58DP006349-03 from the Centers for Disease Control and Prevention. Its contents are solely the responsibility of the authors and do not necessarily represent the official views of the Centers for Disease Control and Prevention. Publication number DEDPH-CS-081121

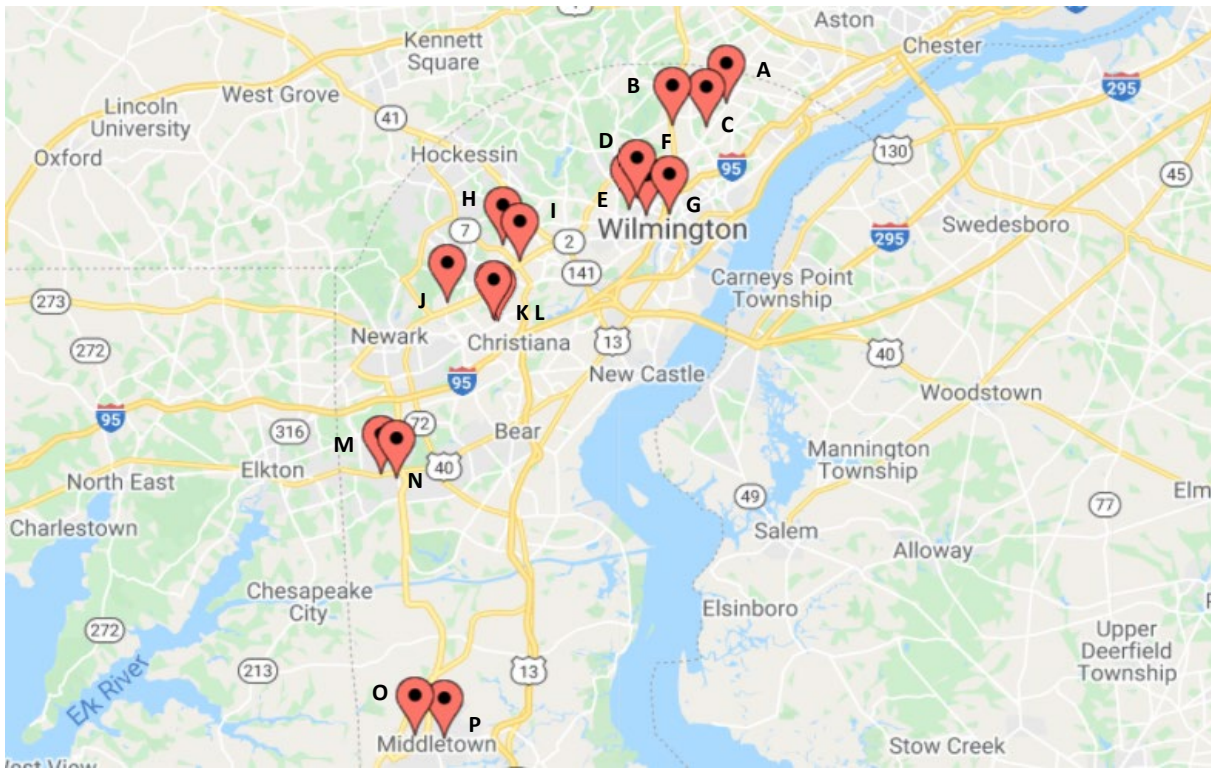


DELAWARE HEALTH AND SOCIAL SERVICES
Division of Public Health



Quality
Insights





Access the online interactive map at: <https://batchgeo.com/map/99f3b5360524e31519f33a6f3b64b1c3>

Mammography Sites in New Castle County

Map	Imaging Center	Address	Phone #	Hours
B	Delaware Imaging Network: Brandywine	3206 Concord Pike Wilmington, DE 19803	302-654-5300	Mon-Fri: 8:30 a.m. to 5:00 p.m. Sat: Call for availability
I	Delaware Diagnostic Imaging, PA	2055 Limestone Road, Suite 104 Wilmington, DE 19808	302-633-6200	Mon-Fri: 8:00 a.m. to 5:30 p.m.
N	Delaware Imaging Network: Glasgow	2600 Glasgow Avenue, Suite 122 Newark, DE 19702	302-832-5590	Mon-Fri: 8:30 a.m. to 5:00 p.m.
O	Delaware Imaging Network: Middletown	120 Sandhill Drive, Suite 2 Middletown, DE 19709	302-449-5400	Mon-Fri: 8:30 a.m. to 5:00 p.m.
H	Delaware Imaging Network: Pike Creek	3105 Limestone Road, Suite 106 Wilmington, DE 19808	302-995-2037	Mon-Fri: 8:30 a.m. to 5:00 p.m.
J	Delaware Imaging Network: Polly Drummond	40 Polly Drummond Hill Road, Bdg. 4 Newark, DE 19711	302-737-5990	Mon-Fri: 8:30 a.m. to 5:00 p.m.
K	Delaware Imaging Network: Women's Imaging Center	J24-26 Omega Drive Newark, DE 19713	302-738-9100	Mon-Thu-Fri: 7:30 a.m. to 4:00 p.m. Wed: 7:30 a.m. to 6:00 p.m., Sat: Every other
C	Christiana Imaging Services at Brandywine	1401 Foulk Road, Suite 100-C Wilmington, DE 19803	302-477-4530	Mon-Fri: 8:00 a.m. to 4:00 p.m.
M	Christiana Imaging Services at Glasgow	300 Biddle Avenue, Suite 100 Newark, DE 19702	302-838-3001	Mon-Fri: 8:00 a.m. to 4:00 p.m.
L	Christiana Helen F. Graham Cancer Center & Research Institute	4701 Ogletown-Stanton Road Newark, DE 19713	302-623-4200	Mon-Fri: 7:00 a.m. to 6:00 p.m. Sat: 7:00 a.m. to 3:00 p.m.
G	Christiana Imaging Services at Wilmington Hospital	501 W. 14th Street Wilmington, DE 19801	302-320-2251	Mon-Wed-Thu-Fri: 7:30 a.m. to 3:30 p.m. Tue: 8:00 a.m. to 6:30 p.m.
P	Middletown Diagnostic Center	209 E Main Street Middletown, DE 19709	302-378-1199	Mon-Fri: 7:00 a.m. to 5:30 p.m.
A	North Wilmington Women's Center	2002 Foulk Road, Suite A Wilmington, DE 19810	302-421-4141	On Hold
D	Clinical Breast Imaging	2401 Pennsylvania Ave., Suite 115 Wilmington, DE 19806	302-658-4800	Mon-Wed-Fri: 9:30 a.m. to 3:30 p.m.
E	St. Francis - The Women's Center-Greenhill	532 Greenhill Avenue Wilmington, DE 19805	302-421-4141	Mon-Fri: 9:00 a.m. to 5:30 p.m.
F	St. Francis Hospital	701 North Clayton Street Wilmington, DE 19805	302-421-4141	Wed: 8:00 a.m. to 4:00 p.m. Fri: 8:00 a.m. to 12:00 p.m.

Source: <https://www.acraccreditation.org/accredited-facility-search>