

Health System Change Component - Clinic Data Snapshot

Data reported through PY03
07/01/2017 – 06/30/2020



2 out of 4

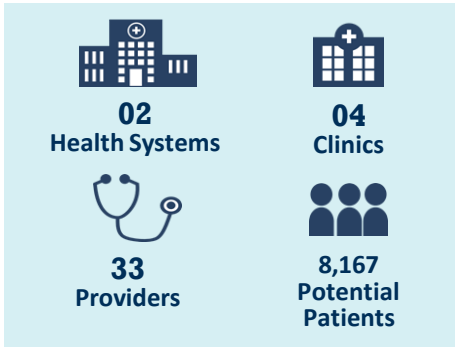
Participating clinics had a Champion at baseline while

4 out of 4 had one at the end of PY01

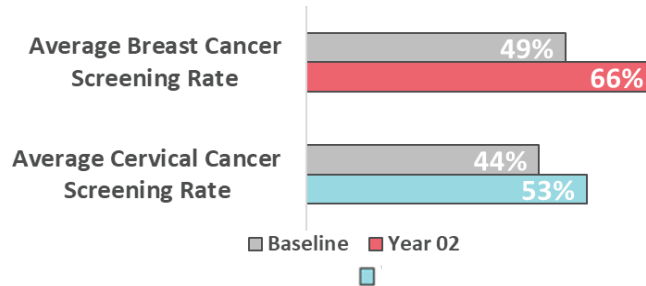
2 out of 4

of clinics that have a written screening policy or protocol in use

Program Reach (at baseline):

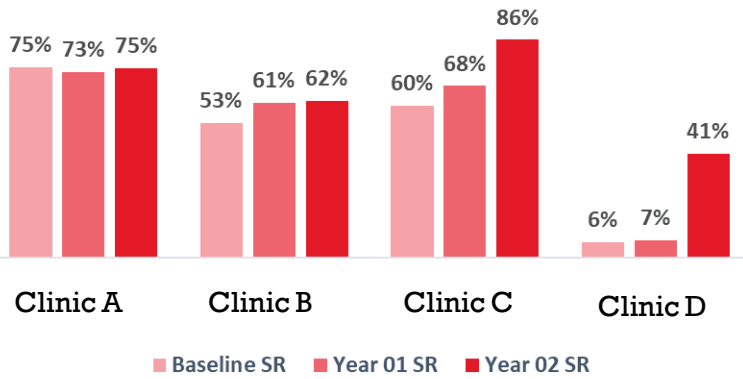


Average Clinic Screening Rate at Baseline vs. Year 02

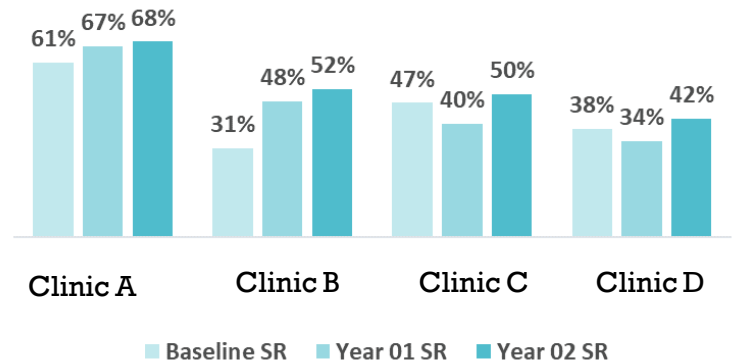


Clinic Screening Rate Trends: Baseline to Year 02

Breast Cancer Screening Rates (SR) by Year

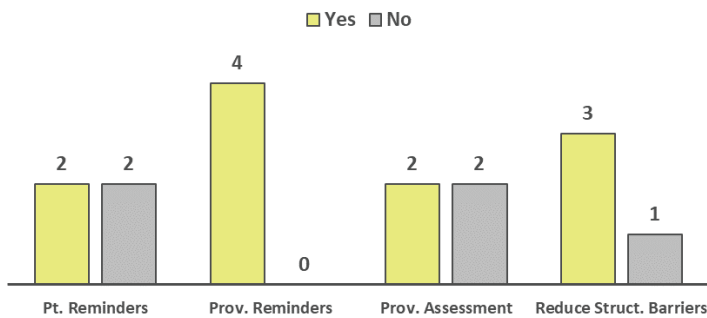


Cervical Cancer Screening Rates (SR) by Year

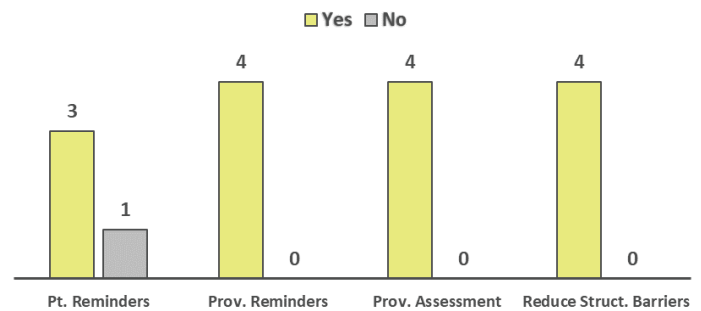


EBIs at Baseline vs. PY 02

Clinics with EBIs in Place at Baseline



Clinics with EBIs in Place at Year 02



Project Impact - Voices from the Field

"It really gives me and the practice a purpose to look into this measure a little deeper and then look at it from different sides"

"The project creates a focus on the subject matter. It walks you through the stages of planning, doing and reviewing"

"We have implemented new procedures and put policies in place to ensure accountability"

How strongly would you recommend participation in this project to other clinics?

