

Accordia Health

Health Systems Change Cancer Screenings Initiative

BASELINE REPORTED

AUDIT FINDINGS

Breast

8.08%

Cervical

13.26%

VS

Breast

11.1%

Cervical

25.7%



Audit findings indicate that cancer screening rates are being underreported due to the lack of data in structured fields

COMPLETED ACTIVITIES



Assessment



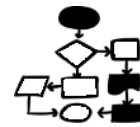
Patient shadowing



Site Visit



Audit



QI Activities

AREAS TO EXAMINE

- Inconsistency of cancer screening data entered into searchable, structured fields within the EHR
- Benefits and/or disadvantages of utilizing the GYN/History tab within the EHR
- Process used to identify patients eligible for cancer screenings
- Process to navigate and/or follow-up with non-compliant patients (i.e. no shows, refusal of screening, etc.)
- Missed opportunities of enrolling patients into AL Breast and Cervical Early Detection Program

NEXT STEPS...

- Select a cancer focus (Breast or Cervical)
- Select a process to improve
- Select at least two evidence-based interventions
- Develop an implementation plan

January 2021 Progress Report

