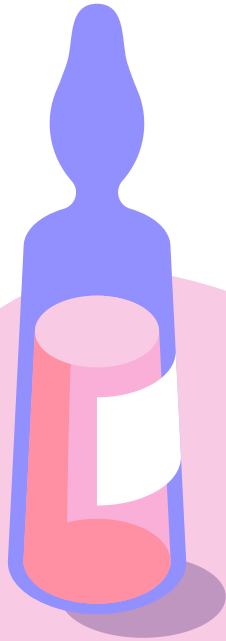
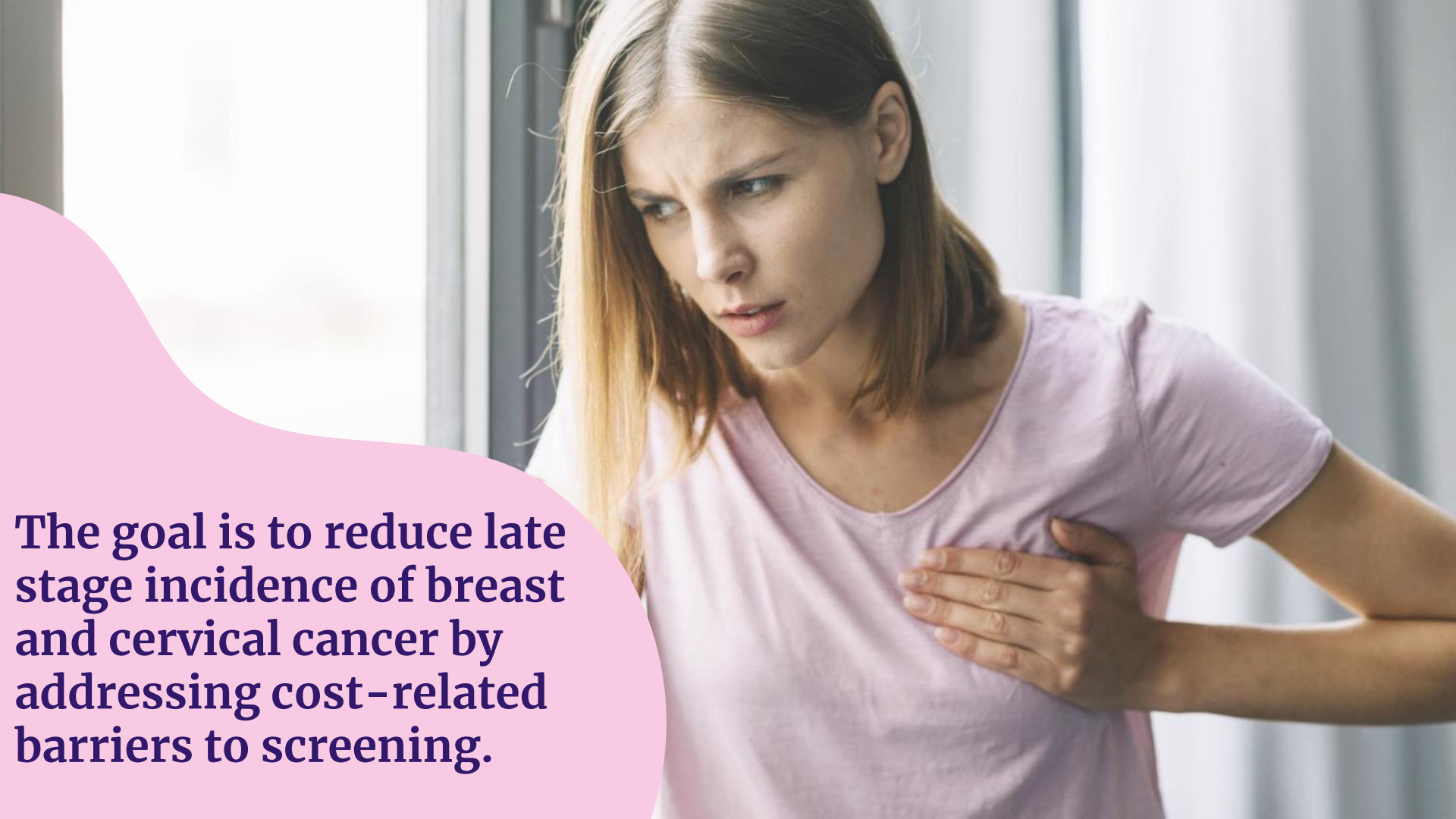


Early Detection Works Program



Early Detection Works is the state of Kansas free breast and cervical cancer screening program for medically underserved women.



The goal is to reduce late stage incidence of breast and cervical cancer by addressing cost-related barriers to screening.

Who qualifies for Ealy Detection Works?

**Kansas
Resident**

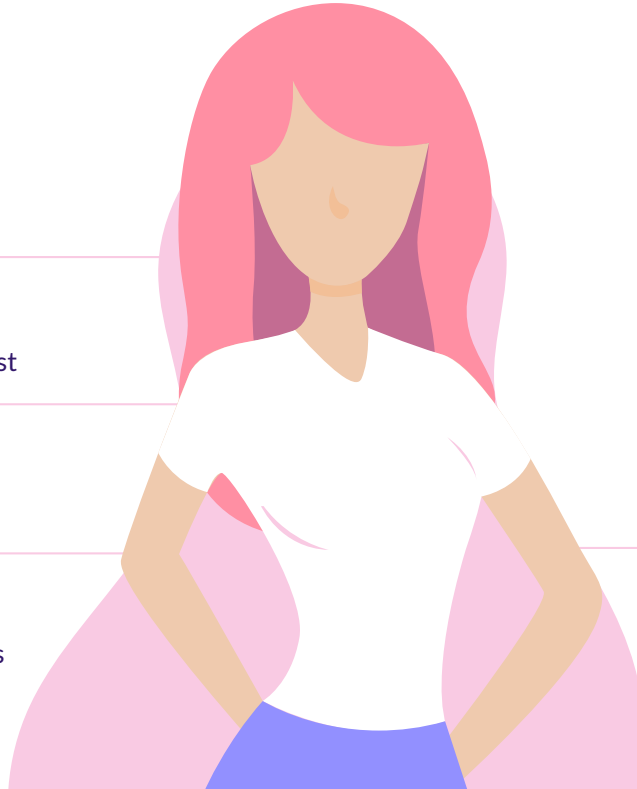
Age

21-64 Cervical 40-64 Breast

**No Health
Insurance**

Income

Must meet income guidelines



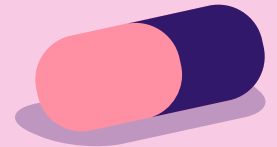
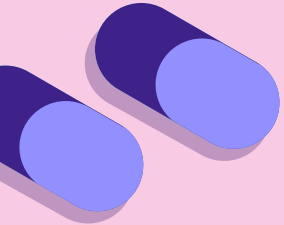
Note

Different tests are covered
based on age, risk, and
results from last screening

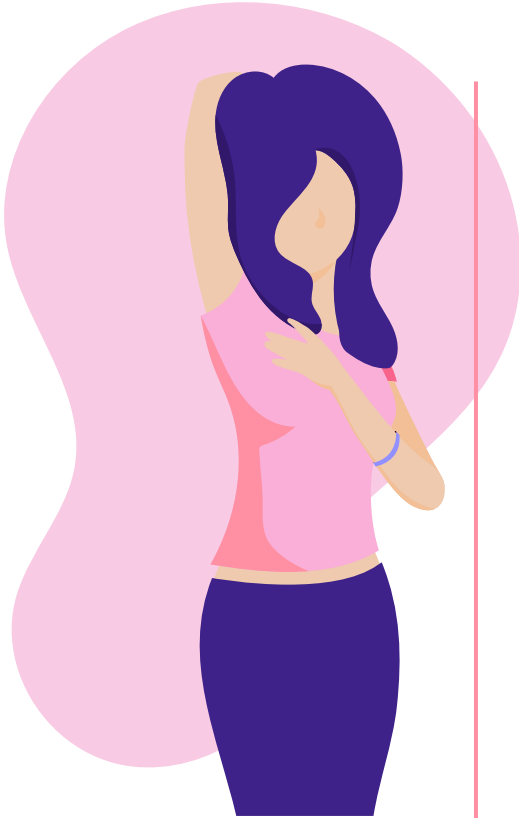
Income Guidelines

Household Size	Monthly Maximum	Annual Maximum
1	\$2,683	\$32,200
2	\$3,629	\$43,550
3	\$4,575	\$54,900
4	\$5,521	\$66,250
5	\$6,467	\$77,600

For households with more than 5 persons, add \$11,350 for each additional person.



Breast and Cervical Services

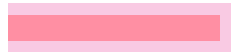


Breast

Clinical
Breast Exam



Screening
Mammogram



Breast
Diagnostics

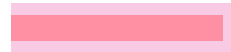


Cervical

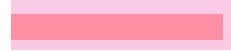
Pap Smear



Pap smear +
HPV

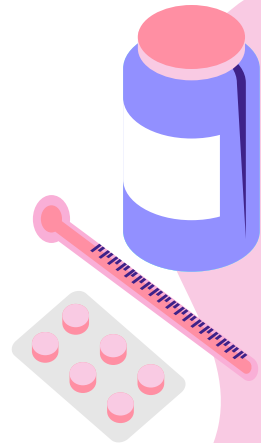


Cervical
Diagnostics



Treatment

Kansas
Medicaid
KanCare





Enrollment Process

- Call the toll free number 877-277-1368
- An enroller collects eligibility information by asking question over the phone
- Information is entered into a secure database
- Eligibility is confirmed with an enrollment number
- Enroller navigates the patient to a clinic for the services

**Call to see if you
qualify for
FREE breast and
cervical cancer
screenings!
877-277-1368**

