



Subjective Cognitive Decline — A Public Health Issue



NATIONAL ASSOCIATION OF
CHRONIC DISEASE DIRECTORS
Promoting Health. Preventing Disease.



CENTERS FOR DISEASE
CONTROL AND PREVENTION

Subjective Cognitive Decline – A Public Health Issue

Subjective Cognitive Decline (SCD) is the self-reported experience of worsening or more frequent confusion or memory loss.^{1,2} It is a form of cognitive impairment and one of the earliest noticeable symptoms of Alzheimer’s disease and related dementias.^{2,3} SCD can have implications for living with and managing chronic disease, or performing everyday activities like cooking or cleaning.² Because SCD is self-reported, it does not imply a diagnosis of cognitive decline by a health care professional.^{1,2}

Cognition is a combination of processes in the brain that includes the ability to learn, remember, and make judgments.¹ When cognition is impaired, it can have a profound impact on an individual’s overall health and well-being.¹ Cognitive decline can range from mild cognitive impairment to dementia, a form of decline in abilities severe enough to interfere with daily life.¹ Alzheimer’s disease is the most common form of dementia.¹⁻³

Some cognitive decline can occur as adults age, but frequently forgetting how to perform routine tasks, for example, is not a normal part of aging and can affect a person’s ability to

live and function independently. Some people with cognitive decline may be unable to care for themselves or perform activities of daily living, such as meal preparation, managing medical appointments, or managing their personal finances. Limitations in cognitive ability may impact a person’s ability to effectively manage medication regimens which can result in poor health outcomes of comorbid chronic diseases like heart disease or diabetes. By educating people about modifiable risk factors, encouraging early assessment and intervention, and understanding its impact on adults and their families, the health and well-being of many older adults may be improved.^{1,2}

The Subjective Cognitive Decline – A Public Health Issue brief is the first in a series of topic-specific documents focusing on public health issues related to older adults. The briefs provide public health professionals with the most recent data available on health and age-related conditions, including the importance of brain health, the management of chronic conditions, the burdens of caregiving, to help identify needs and lessen the future effects of a growing older population.

Subjective Cognitive Decline is self-reported confusion or memory problems that have been happening more often or getting worse in the past 12 months.⁴

1. <http://www.cdc.gov/aging/healthybrain/>. Accessed 01/2017.

2. Jessen F, Amariglio RE, et al. Subjective Cognitive Decline Initiative (SCD-I) Working Group, A conceptual framework for research on subjective cognitive decline in preclinical Alzheimer’s disease, *Alzheimers Dement*. 2014 November; 10(6): 844–852.

3. Alzheimer’s Association. 2018 Facts and Figures. *Alzheimers Dement* 2018;14(3):367-429.

Subjective Cognitive Decline is a Growing Public Health Issue

With the growing older adult population and the related increase in the need for health and social services, the public health community is challenged to be proactive. By acting quickly and strategically to stimulate needed changes to systems and environments, public health professionals can work to mitigate future impacts of SCD as well as Alzheimer's disease and related dementias on the health and wellness of the public. This is particularly important as these issues can impact not only older adults but also their family and friends who act as caregivers.

This brief examines the following questions:

- What percentage of adults live with SCD?
- What percentage of adults with SCD live alone?
- What percentage of adults with SCD have discussed their memory loss or confusion with a health care professional?
- What percentage of adults with SCD experience coronary heart disease (including angina and myocardial infarction) or strokes?
- What percentage of adults with SCD also have other chronic diseases?
- What percentage of adults with SCD also report issues with their mental health?
- What percentage of adults with SCD have difficulty with everyday activities, like cooking, cleaning, or with work or volunteering?

SCD data presented in this brief were collected from community-dwelling adults aged 45 years and older in 2015-2017 through the Behavioral Risk Factor Surveillance System (BRFSS).⁴ Questions related to SCD were administered as part of the BRFSS in 49 states, the District of Columbia and Puerto Rico. For states administering the module during multiple years, the most recent data were used for this brief. Additional results for these data were previously published.⁵ Additional data reports can be generated and viewed through the CDC Healthy Aging Data Portal (<https://www.cdc.gov/aging/agingdata/index.html>).

These data were examined in two age groups, adults 45-64 years and 65 years of age and older, as well as by sex, race, Hispanic ethnicity, chronic disease status, and other demographic characteristics.

By acting quickly and strategically to stimulate needed changes to systems and environments, public health professionals can work to mitigate future impacts of SCD as well as Alzheimer's disease and related dementias on the health and wellness of the public.

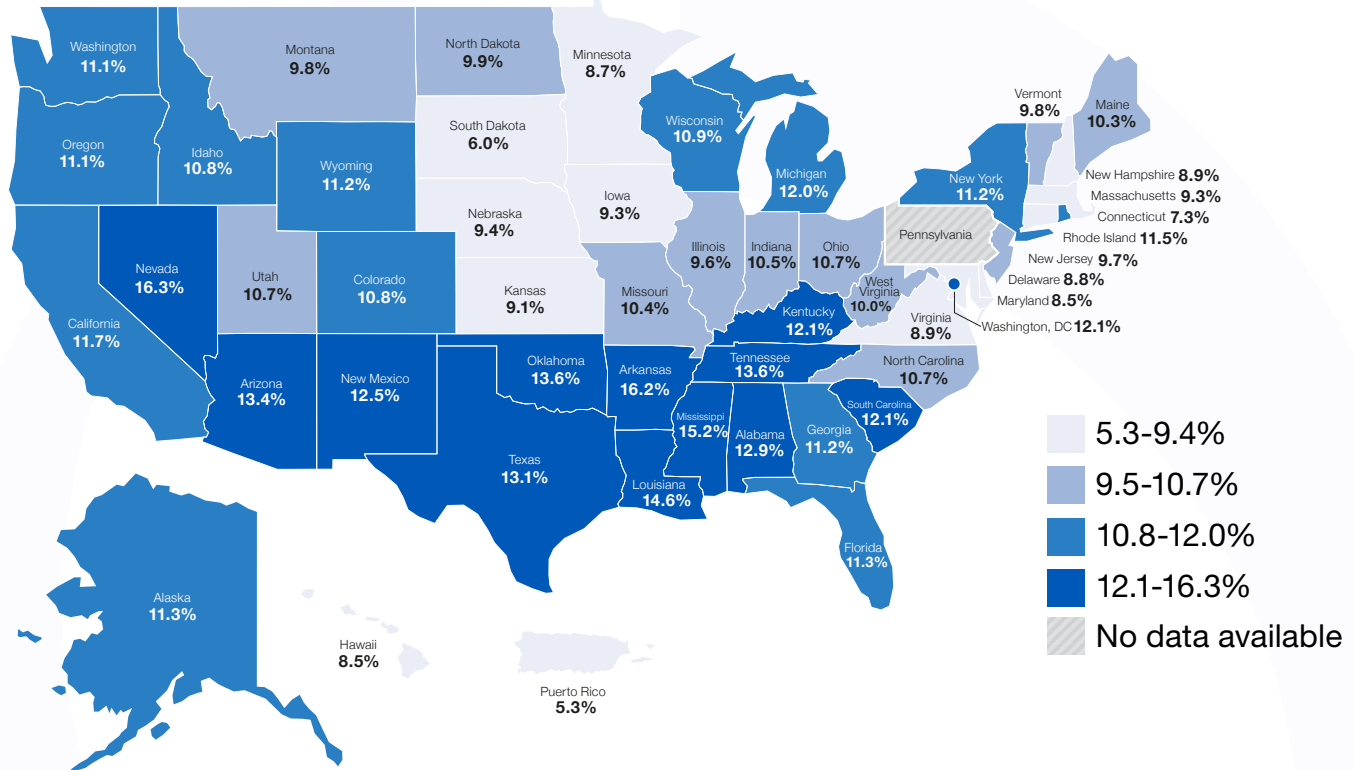


4. Behavioral Risk Factor Surveillance System, Centers of Disease Control and Prevention 2015- 2016

5. Taylor CA, Bouldin ED, McGuire LC (2018). Subjective Cognitive Decline Among Adults Aged ≥45 Years — United States, 2015–2016. MMWR Morb Mortal Wkly Rep, 67(27): 753–757.

Prevalence of Subjective Cognitive Decline in the U.S.

Figure 1: Adults 45 years of age and older with Subjective Cognitive Decline

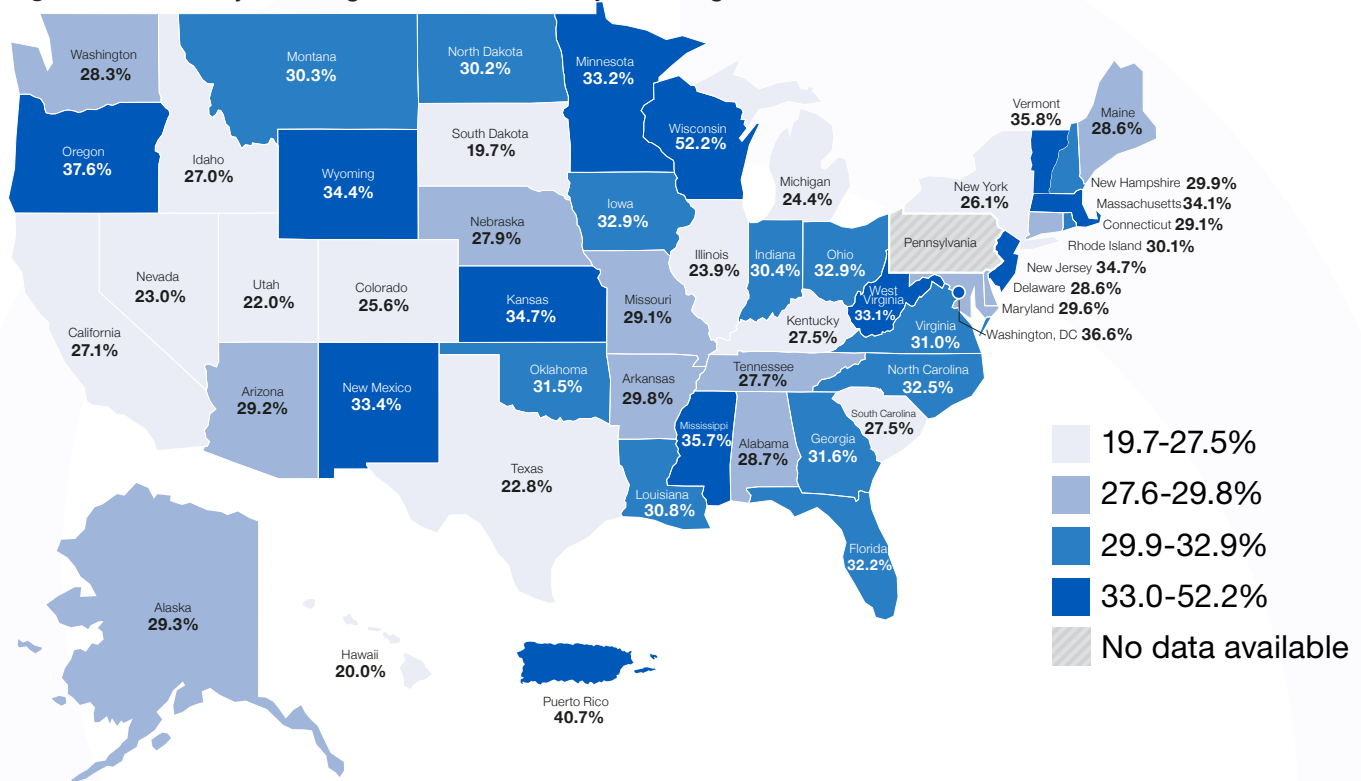


During the past 12 months, have you experienced confusion or memory loss that is happening more often or is getting worse?

- The prevalence of subjective cognitive decline (SCD) is 11.1%, or 1 in 9 adults.
- The prevalence of SCD among adults aged 65 years and older is 11.7% compared to 10.8% among adults 45-64 years of age.
- The prevalence of SCD is 11.3% among men compared to 10.6% among women.
- The prevalence of SCD differs among racial/ethnic groups, 10.9% of Whites report SCD compared to 12.8% of Blacks/African Americans, 11.0% of Hispanics, and 6.7% of Asians and Pacific Islanders.
- Lower prevalence of SCD is reported in adults with more years of formal education.

Percentage of Adults Living Alone with Subjective Cognitive Decline

Figure 2: Adults 45 years of age and older with Subjective Cognitive Decline who live alone



How many adults aged 18 and older live in your household? How many children less than 18 years of age live in your household?

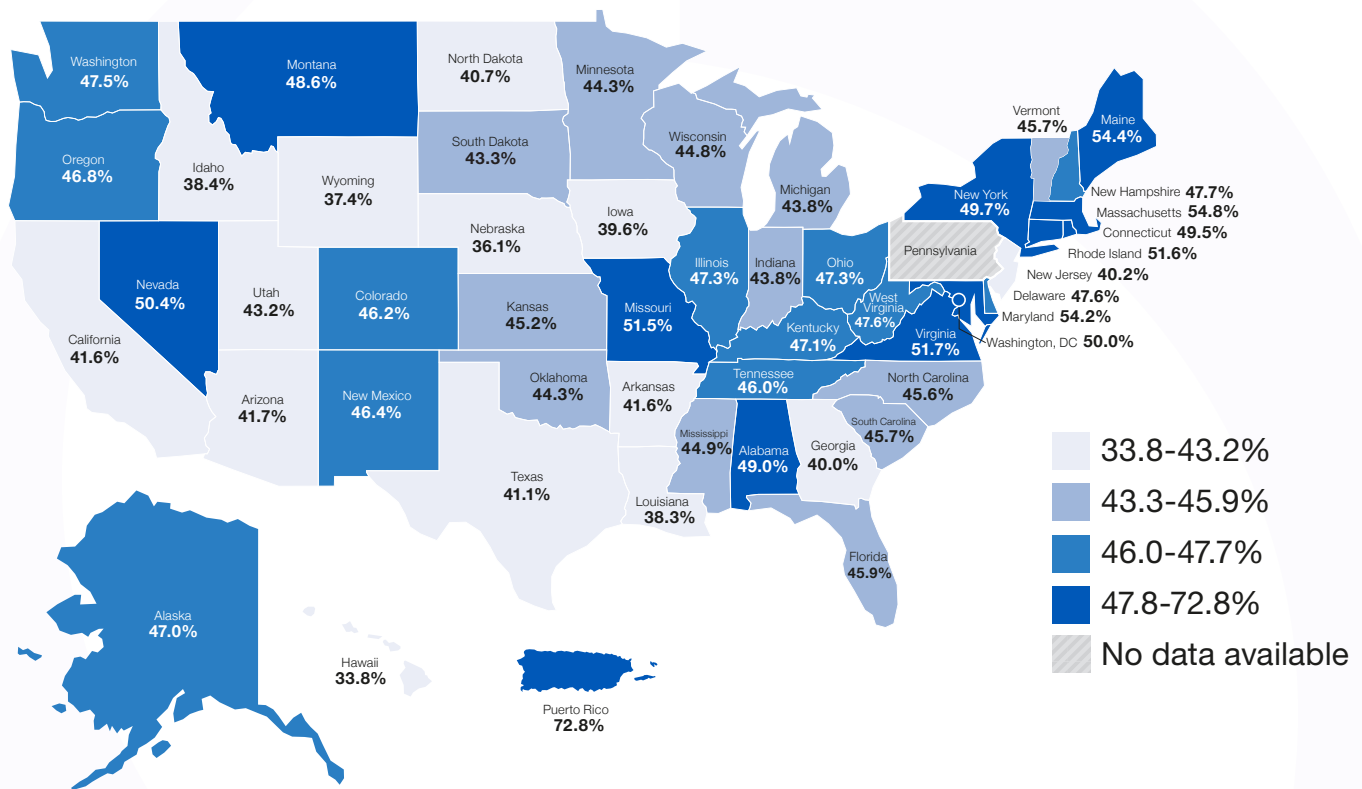
Older adults who live alone can be at risk for poor health outcomes, are less likely to use health services, and are more vulnerable to self-neglect and fall-related injuries than those living with others.^{6,7} Older adults who live alone report more unmet needs such as managing money, medications, mobility, and some activities of daily living.^{6,7}

- Of adults with SCD, 29.3% live alone.
- Among persons reporting SCD aged 45-64 years, 24.7% live alone compared to 36.2% of those aged 65 years and older.
- 30.3% of women with SCD live alone compared to 28.1% of men.
- The prevalence of living alone among adults with SCD differs among racial/ethnic groups. Of those with SCD, 30.4% of Whites live alone compared to 35.5% of Blacks/African Americans, 18.3% of Hispanics, and 15.3% of Asians and Pacific Islanders.

6. Gibson AK, Richardson VE. Living Alone With Cognitive Impairment. *Am J Alzheimers Dis Other Dement.* 2017 Feb;32(1):56-62
 7. Portacolone E, Johnson JK, et.al. The Effects and Meanings of Receiving a Diagnosis of Mild Cognitive Impairment or Alzheimer's Disease When One Lives Alone. *J Alzheimer's Disease* 61 (2018) 1517-1529.

Percentage of Adults with Subjective Cognitive Decline, who discussed their symptoms of memory loss and confusion with a health care professional

Figure 3: Adults 45 years of age and older with Subjective Cognitive Decline who report discussing their memory loss and/or confusion with a healthcare provider



Have you or anyone else discussed your confusion or memory loss with a health care professional?

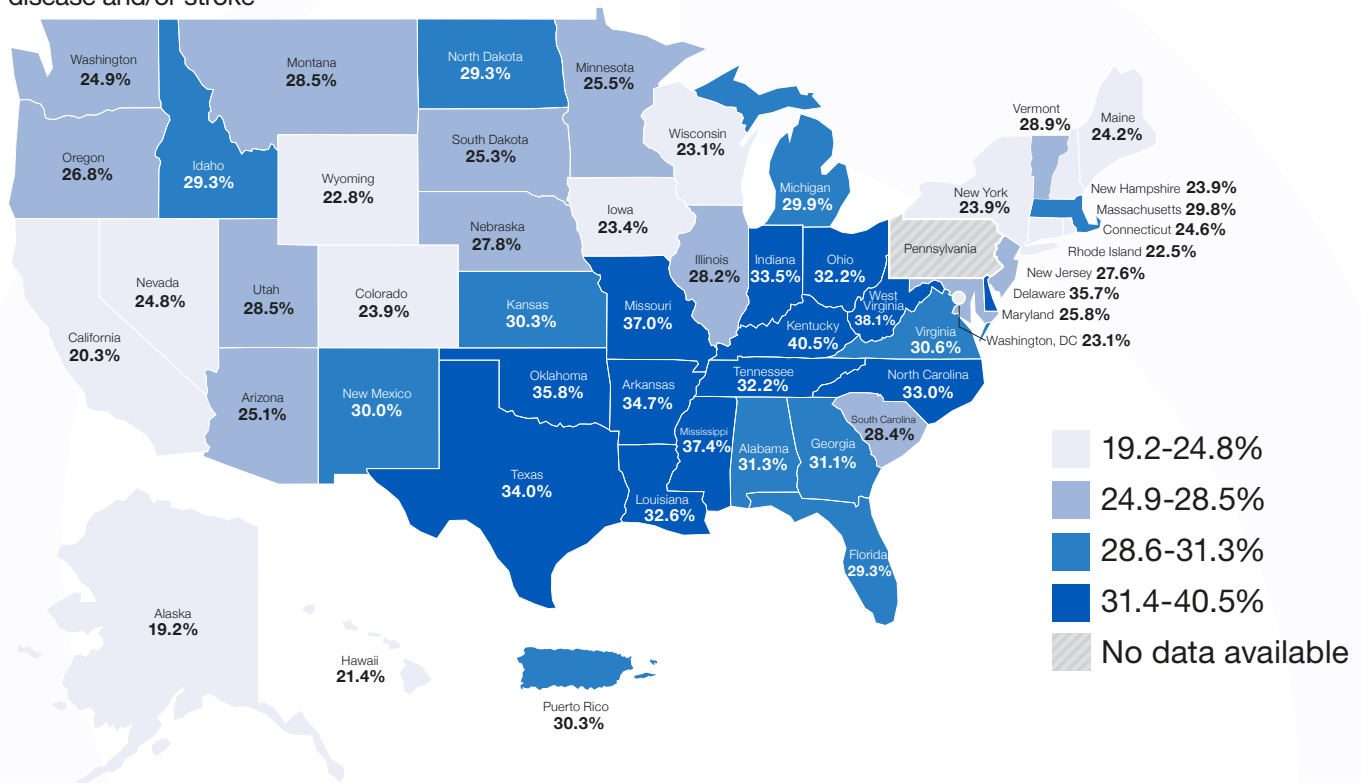
Researchers have found that few adults with SCD discussed their confusion or memory loss with a health care professional.⁷⁻⁹ In fact, the prevalence of cognitive decline identified in community surveys is over twice that reported in medical records of general practitioners.^{8,9} Opportunities for improvement exist for increased screening, diagnosis, and identification of treatable cause(s).⁹

- Less than half of adults with SCD (45.3% of adults aged 45 years and older) reported discussing symptoms of confusion or memory loss with a health care professional.
- Among persons reporting SCD, 48.8% of those aged 45 to 64 years reported discussing their memory loss or confusion with a health care professional compared to 39.8% of persons aged 65 years and older.
- Half (50.5%) of women reported discussing SCD with a health care professional compared to 39.2% of men.
- The percentage of those who discussed SCD with a health care professional varies by race and ethnicity. Among Whites, 46.0% reported discussing SCD with a health care professional compared to 45.3% of Blacks/African Americans, 40.2% of Hispanics and 34.1% of Asians and Pacific Islanders.

8. Buckley BF, Salingab MM, et al., Subjective Cognitive Decline from a Phenomenological Perspective: A Review of the Qualitative Literature, J Alzheimer's Disease 48(2015) S125-S140
 9. Waldorff FB, et al. If you don't ask (about memory), they probably won't tell. J Fam Pract. 2008 Jan;57(1):41-4.

Percentage of Adult with Subjective Cognitive Decline who report Coronary Heart Disease** or Stroke

Figure 4: Adults 45 years of age and older with Subjective Cognitive Decline who report having coronary heart disease and/or stroke



**Has a doctor, nurse or other health professional ever told you that you had one of the following: Coronary heart disease (including angina and/or myocardial infarction)?
Has a doctor, nurse or other health professional ever told you that you a stroke?**



Coronary heart disease can lead to decreased cognitive function that can impact effective chronic disease self-management.¹⁰⁻¹³ Cognitive impairment in areas of learning, memory, and decision-making can increase the need for assistance in self-management, such as help with medication management or scheduling medical appointments.¹⁰⁻¹³

- More than 1 in 4 (28.6%) adults with SCD reported having coronary heart disease or stroke.
- Among adults with SCD, 23.9% of adults aged 45-64 years report having coronary heart disease or stroke, compared to 35.9% of adults aged 65 years and older.
- One in four (26.3%) women with SCD reported having coronary heart disease or stroke, compared to nearly one-third (31.3%) of men.
- The prevalence of CHD among adults with SCD is 25.7% in adults who completed at least some post high school education or higher compared to 31.7% among adults with a high school degree and 31.0% among adults with less than a high school degree.

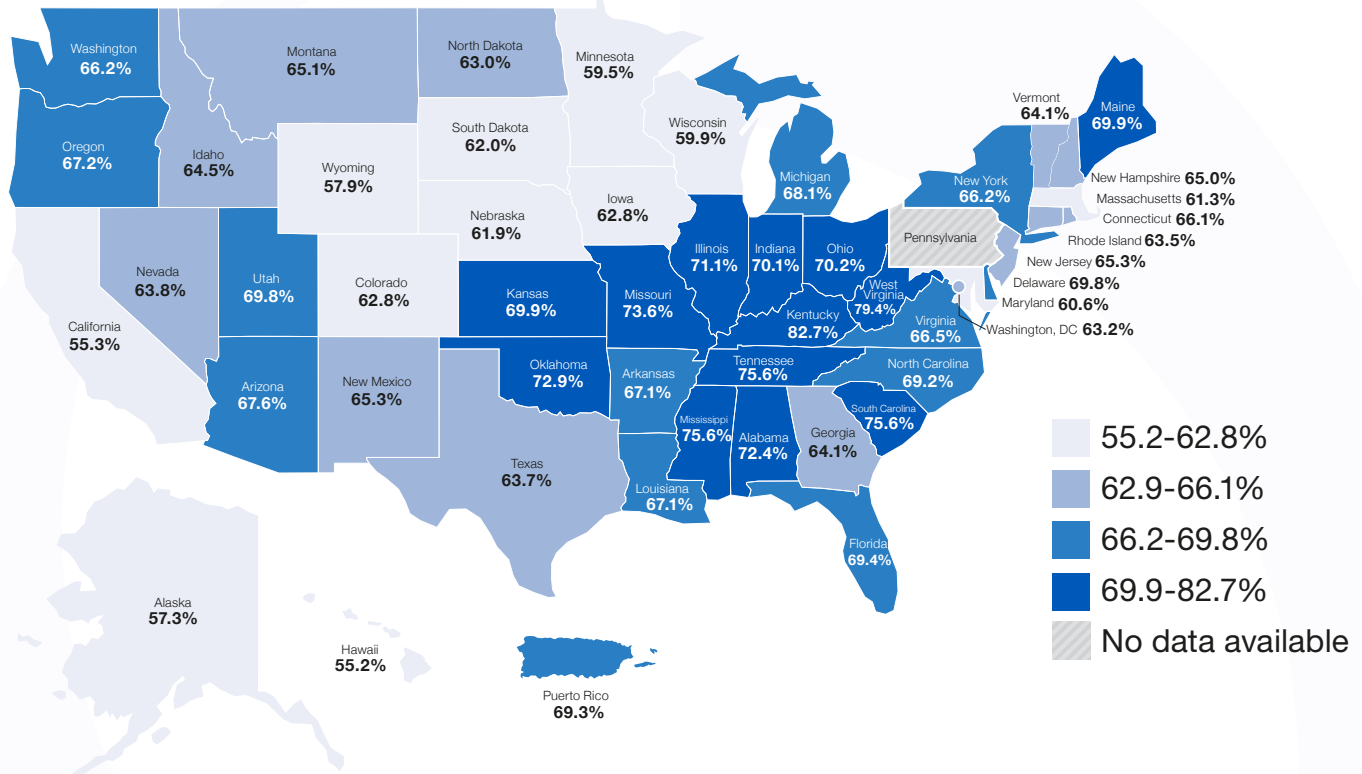
** Respondents were classified as having coronary heart disease if they reported experiencing a heart attack (i.e., myocardial infarction) or angina

10. Haring, et al. Cardiovascular Disease and Cognitive Decline in Postmenopausal Women: Results From the Women's Health Initiative Memory Study. J Am Heart Assoc. 2013 Dec; 2(6):

11. Lutski M et al. Cardiovascular Health and Cognitive Decline 2 Decades Later in Men with Preexisting Coronary Artery Disease. Am J Cardiol. 2018 Feb 15;121(4):410-415.

Percentage of Adults with Multiple Chronic Diseases and Subjective Cognitive Decline

Figure 5: Adults 45 years of age and older with Subjective Cognitive Decline who reported having 2 or more chronic diseases including coronary heart disease and/or stroke



Has a doctor, nurse or other health professional ever told you that you had one of the following: Coronary heart disease (including angina and/or myocardial infarction), stroke, asthma (still have), cancer (skin, other types of cancer), COPD, arthritis, depressive disorder, kidney disease, diabetes?

Multiple chronic diseases (two or more) have been found to be associated with increased cognitive decline.¹²⁻¹⁴ As the number of chronic diseases increases, the management of these conditions becomes increasingly complex, which may lead to a greater need for assistance. The presence of chronic diseases includes the report of at least one of the following: heart attack, coronary heart disease, stroke, asthma, cancer, arthritis, or diabetes.

- More than two-thirds (66.2%) of adults with SCD and have two or more chronic diseases.
- More than two-thirds (69.1%) of adults 65 years of age and older have both SCD and two or more chronic diseases, compared to 64.3% of adults 45-64 years of age.
- With respect to sex, 70.7% of women report SCD and having 2 or more chronic diseases compared to 61.2% of men.



15. Self-Reported Frequent Mental Distress Among Adults -- United States, 1993-1996, MMWR May 01, 1998 / 47(16);325-331.
 16. Anderson L, et al. Demographic and Health Status Differences Among People Aged 45 or Older With and Without Functional Difficulties Related to Increased Confusion or Memory Loss, 2011 Behavioral Risk Factor Surveillance. Prev Chronic Dis 2015;12:140429

Subjective Cognitive Decline and Frequent Mental Distress

Mental distress includes stress, depression and problems with emotions.¹⁵ Frequent mental distress (FMD) is defined as experiencing mental distress or having mentally unhealthy days for at least 14 days in a 30 day period.¹⁵

About how many days during the past 30 days was your mental health not good? (14 or more days = frequent mental distress)

- One third (33.7%) of adults with SCD report FMD.
- One in five (20.9%) adults 65 years of age and older with SCD reported FMD compared to 42.0% of adults 45-64 years of age.
- 37.6% of women with SCD reported FMD compared to 29.4% of men.

Subjective Cognitive Decline—related Functional Difficulties

SCD can impact people's lives in ways that extend beyond thinking and remembering. It may interfere with a person's ability to engage in activities they typically perform, like chores, socializing, taking medications, or working outside the home. An SCD-related functional difficulty is defined as always, usually, or sometimes giving up day-to-day household activities or chores and/or experiencing interference in engaging in activities outside the home.¹⁶

During the past 12 months, as a result of confusion or memory loss, how often have you given up day-to-day household activities or chores you used to do, such as cooking, cleaning, taking medications, driving, or paying bills?

During the past 12 months, how often has confusion or memory loss interfered with your ability to work, volunteer, or engage in social activities outside the home.

- Half (50.6%) of adults with SCD experienced SCD-related functional difficulties.
- SCD-related functional difficulties were more common among middle-aged adults (45-64 years of age; 58.7%) than among older adults (age 65 and older; 38.0%).
- More than half (53.4%) of women aged 45 years and older reported SCD related functional difficulties compared to 47.3% of men.



Call to Action

Subjective Cognitive Decline (SCD) is a public health issue and public health has a role in alleviating its impact. Below are some of the actions that can be taken to improve the health and well-being of persons with SCD. For additional actions, refer to *The Healthy Brain Initiative: State and Local Public Health Partnerships to Address Dementias, The 2018-2023 Road Map*.¹⁷

1. Educate the public and health care professionals about brain health and the burden of SCD.
2. Increase awareness that dementia, such as Alzheimer's disease, is not a normal part of aging.
3. Raise awareness about the best available evidence on dementia (including detection) and dementia caregiving, including risk reduction.
4. Use this report and other analyses to make informed decisions and policies and promote the role of public health in addressing SCD as a priority.
5. Increase awareness about the importance of managing chronic diseases, including conditions associated with coronary heart disease or stroke, among people with SCD and at all stages of dementia.
6. Encourage patients and health care professionals to discuss SCD during routine medical office visits.

Technical Information

The Behavioral Risk Factor Surveillance System (BRFSS) is the nation's premier system of health-related telephone surveys that collect state data about U.S. residents regarding their health-related risk behaviors, chronic health conditions, and use of preventive services. Established in 1984 with 15 states, BRFSS now collects data in all 50 states as well as the District of Columbia and three U.S. territories. BRFSS completes more than 450,000 adult interviews each year, making it the largest and longest continuously conducted health survey system in the world.

CDC's Behavioral Risk Factor Surveillance System (BRFSS) helps states survey U.S. adults regarding a wide range of health issues and behaviors that affect their health. The crucial information gathered through this state-based telephone surveillance system is used by national, state, and local public health agencies to identify populations that might be most at risk and to monitor the need for and the effectiveness of various public health interventions.

Although the BRFSS is a useful tool for assessing cognitive decline in the older adult population, it has some limitations: it excludes people who do not have telephones or are in institutions such as nursing homes; it may underrepresent people who are severely impaired because of the functional capacity required to participate in the survey; and responses to BRFSS are self-reported and therefore have not been confirmed by a healthcare provider. Despite these limitations, the BRFSS is a uniquely powerful tool to provide the prevalence of cognitive decline and related health issues among older community-dwelling U.S. adults, due to its large sample size and proven reliability and validity.

The BRFSS is administered and supported by the Division of Population Health, National Center for Chronic Disease Prevention and Health Promotion, CDC. For more information, please visit <http://www.cdc.gov/brfss>.

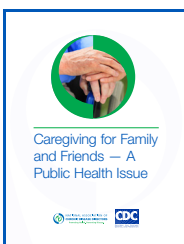
State of Aging and Health in America: Data Brief Series

The National Association of Chronic Disease Directors (NACDD) and the Centers for Disease Control and Prevention (CDC) developed a series of topic-specific data briefs on public health issues related to the aging population. The series is composed of four (4) briefs. Each brief provides data by state, age, gender, race, and ethnicity from the Behavioral Risk Factor Surveillance System. Topics include brain health, caregiving, heart disease, and other chronic diseases. Public health can use the data to make informed decisions and develop effective policies. Action steps provide direction on how to improve the health and well-being of aging Americans.



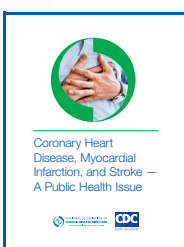
Subjective Cognitive Decline (SCD) is the self-reported experience of worsening or more frequent confusion or memory loss. It is a form of cognitive impairment and can be one of the earliest noticeable symptoms of Alzheimer's disease and related dementias.

The SCD Brief has recent data on age-related conditions, brain health, and chronic disease management.



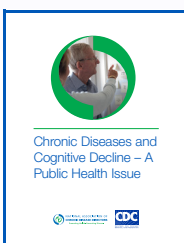
Caregiving is an important public health issue that affects the quality of life for millions of individuals. Caregivers provide assistance with another person's social or health needs. Caregiving may include help with one or more activities important for daily living such as bathing, dressing, and providing transportation.

The Caregiving Brief has recent data on age-related conditions, brain health, chronic disease management among caregivers, and burdens of caregiving.



Coronary heart disease, myocardial infarction, and stroke increase as the older adult population lives longer. Coronary heart disease can lead to decreased cognitive function. Promotion of chronic disease self-management through high blood pressure control and maintaining physical activity is critical.

The Heart Disease and Stroke Brief has recent data on age-related conditions, chronic disease management, blood pressure medication use, and the importance of physical activities.



Older adults are more likely to experience multiple chronic diseases, also known as co-morbidities, and greater functional limitations. Memory loss can complicate the management of these diseases.

The Chronic Diseases and Cognitive Decline Brief has recent data on multiple chronic diseases, brain health, and chronic disease management.

View all briefs at www.cdc.gov/aging/publications/briefs.htm
or at www.chronicdisease.org/page/HealthyAging