

Socially Determined: Moving to Public Health 3.0

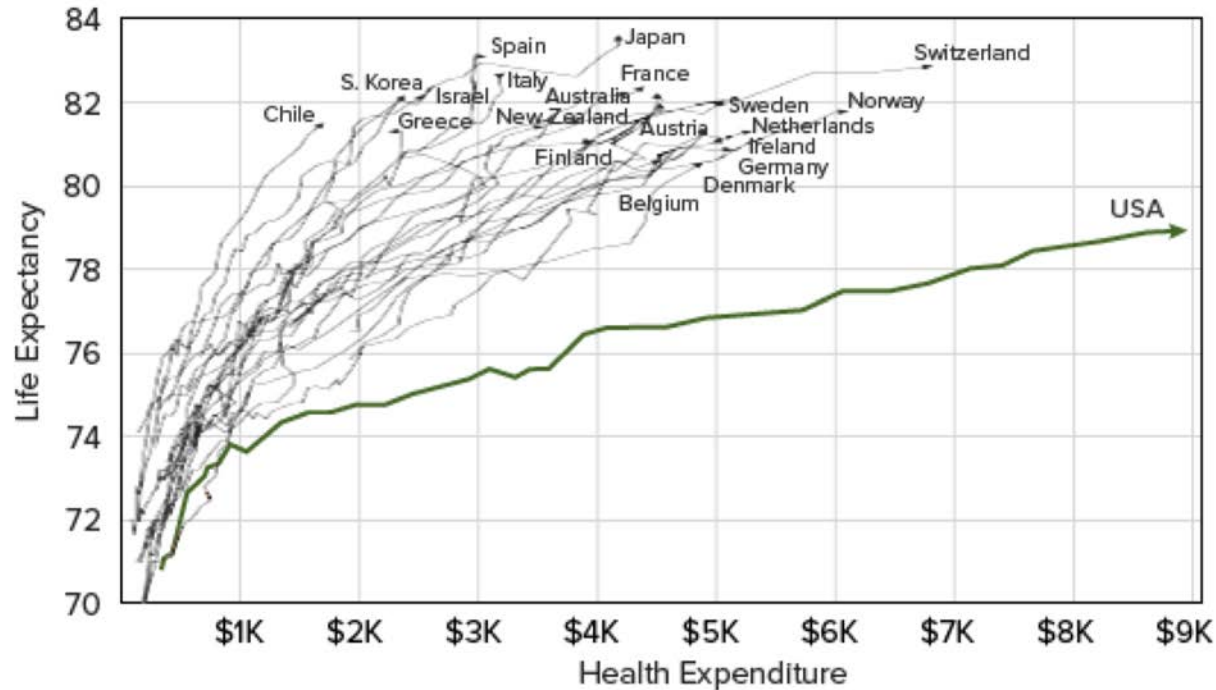
Outlines of an Implementation
Road Map for Chronic Disease Programs



NATIONAL ASSOCIATION OF
CHRONIC DISEASE DIRECTORS
— Chronic Disease Academy —

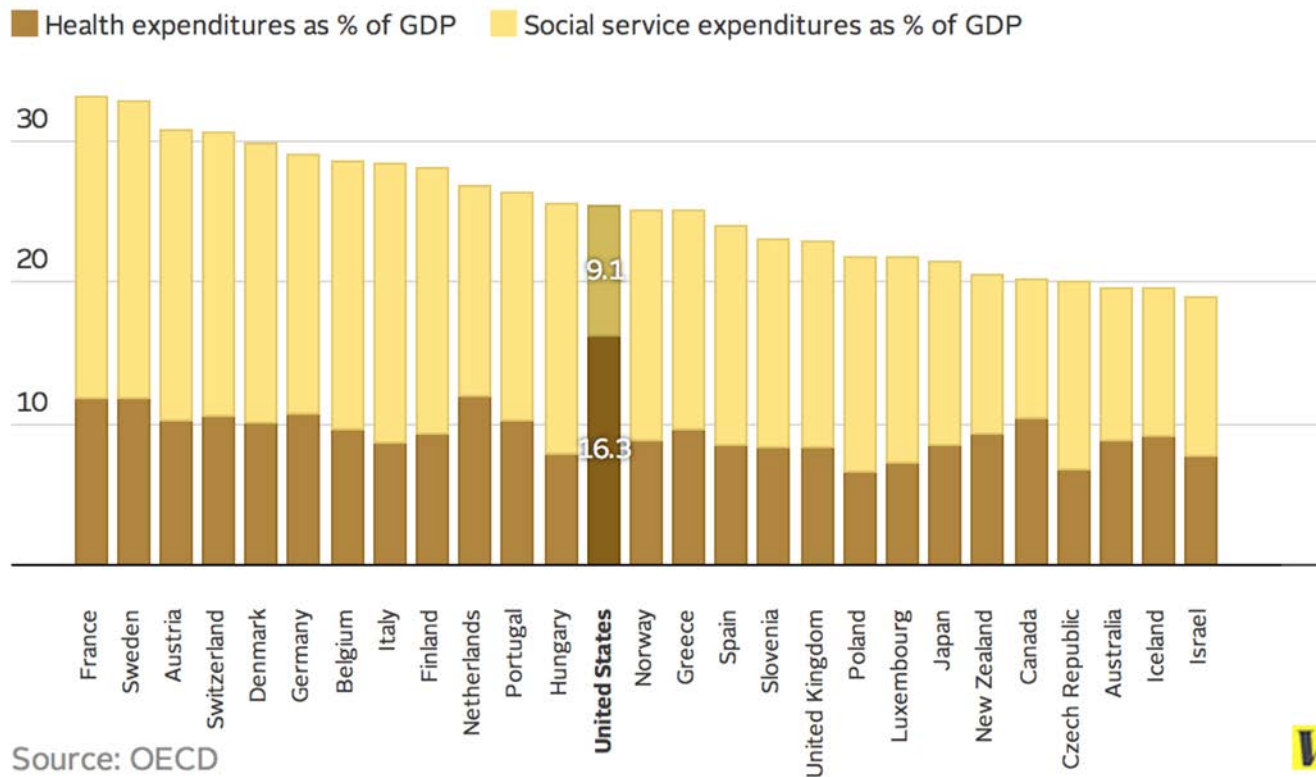
U.S. Life Expectancy vs. Health Expenditure

From 1970 to 2014, citizens of OECD countries have outlived their American counterparts – for a fraction of the associated costs.



Source: Visual Capitalist

The U.S. is an anomaly in health and social spending patterns

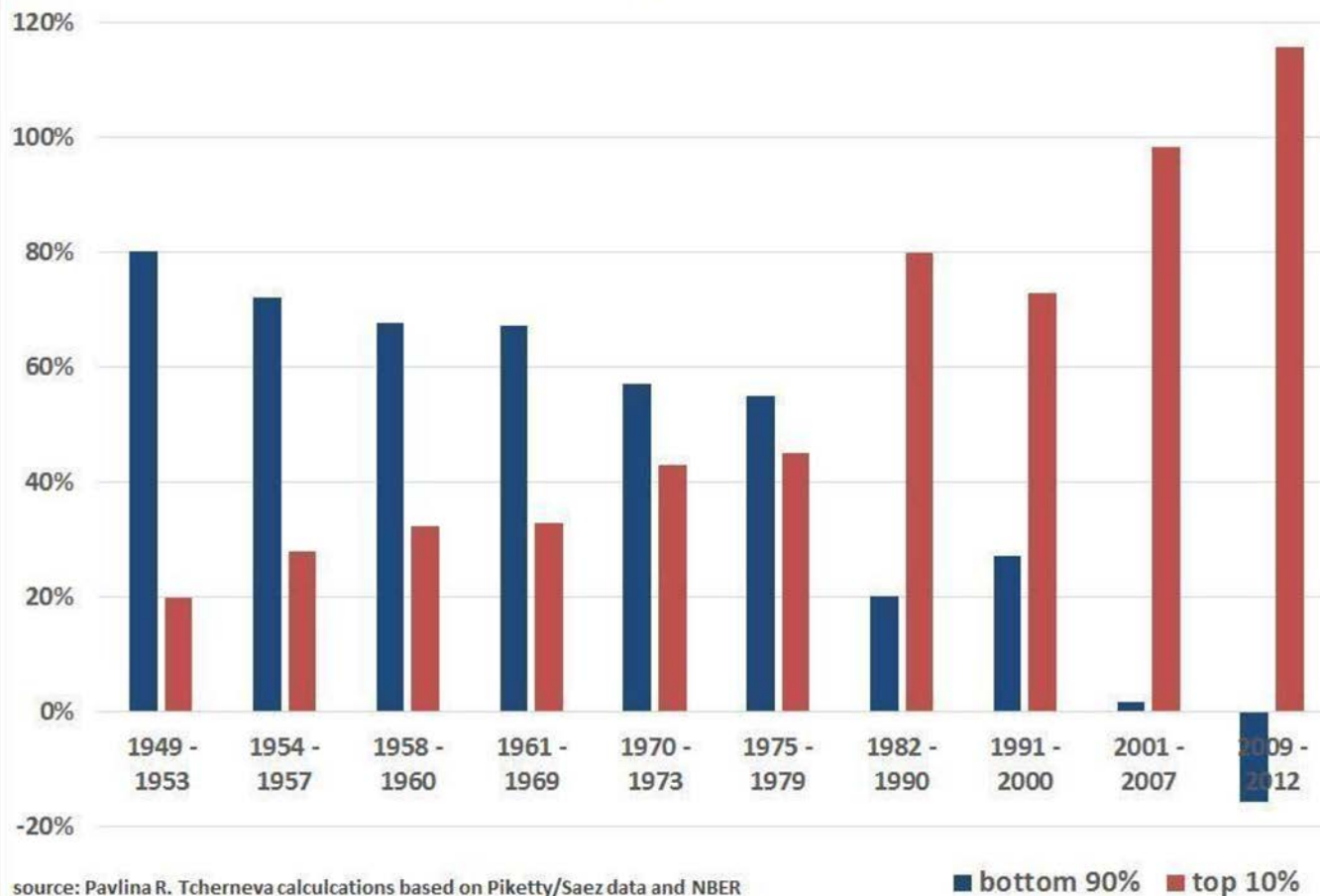


Source: OECD

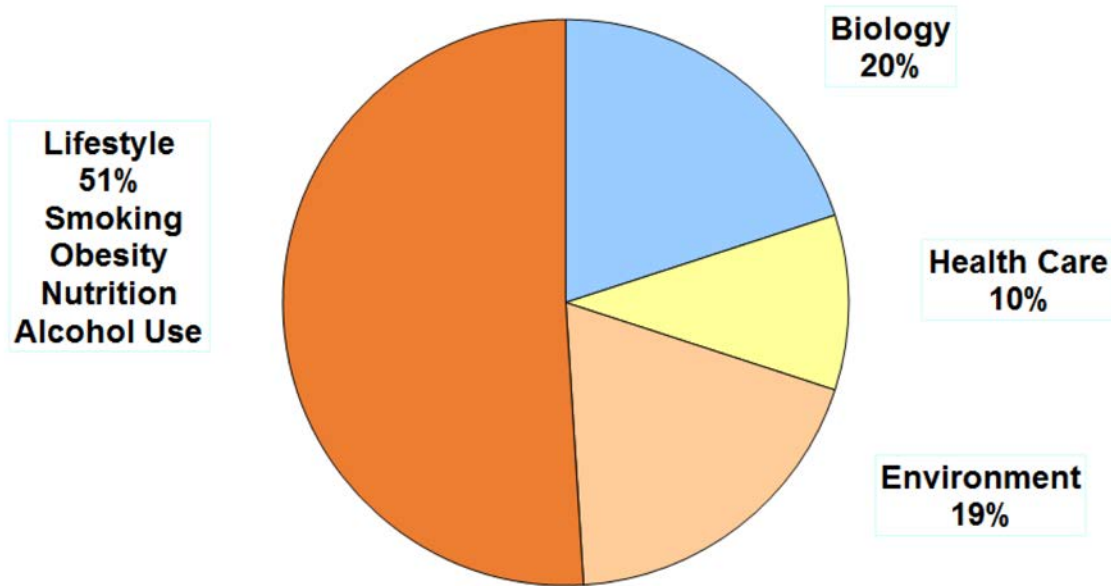


Distribution of Average Income Growth During Expansions

NATIONAL ASSOCIATION OF
CHRONIC DISEASE DIRECTORS
Chronic Disease Academy



Factors Influencing Health Status



Source: McGinnis, J.M and Foege, W.H. (1993). "Actual Causes of Death in the United States," Journal of the American Medical Association.

Future Directions for Public Health

Public Health 1.0

- Infection control through treatment - TB
- Clinical preventive measures – immunizations

Public Health 2.0

- Policy and environmental change – Seatbelts, tobacco tax
- Systems building – Diabetes Prevention Program

Public Health 3.0

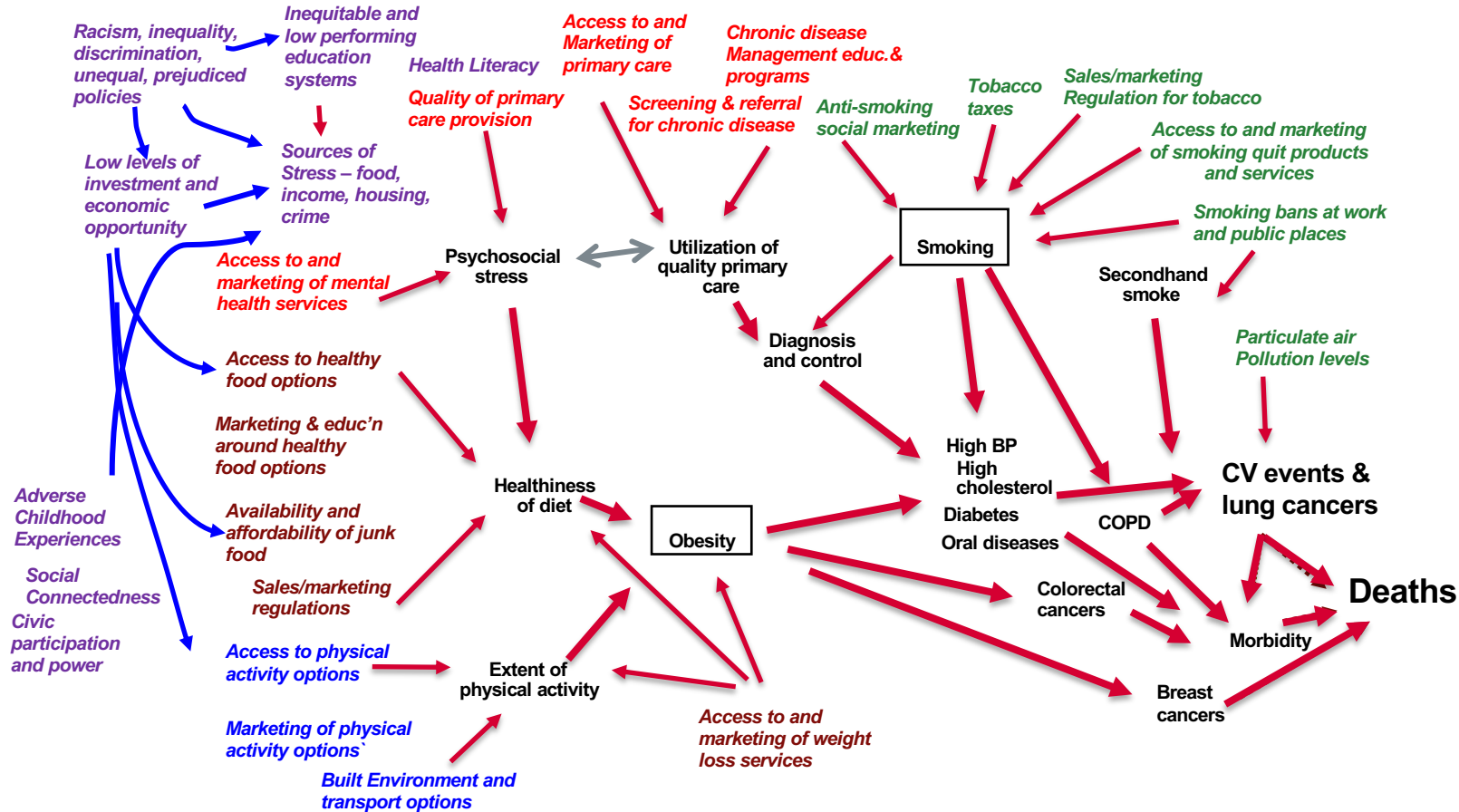
- Social determinants of health – food, housing, transport
- Partnerships – Education, Human Services, Transportation, Housing, Revenue....



Principles for the Development of **Public Health 3.0**

- Don't reinvent the wheel, learn from others
- Don't stop doing what you're doing
- Use your training
 - Adhere to the evidence-base
 - Get the model right - social-ecological, multifactorial
 - Work through partnerships
 - Lead with humility

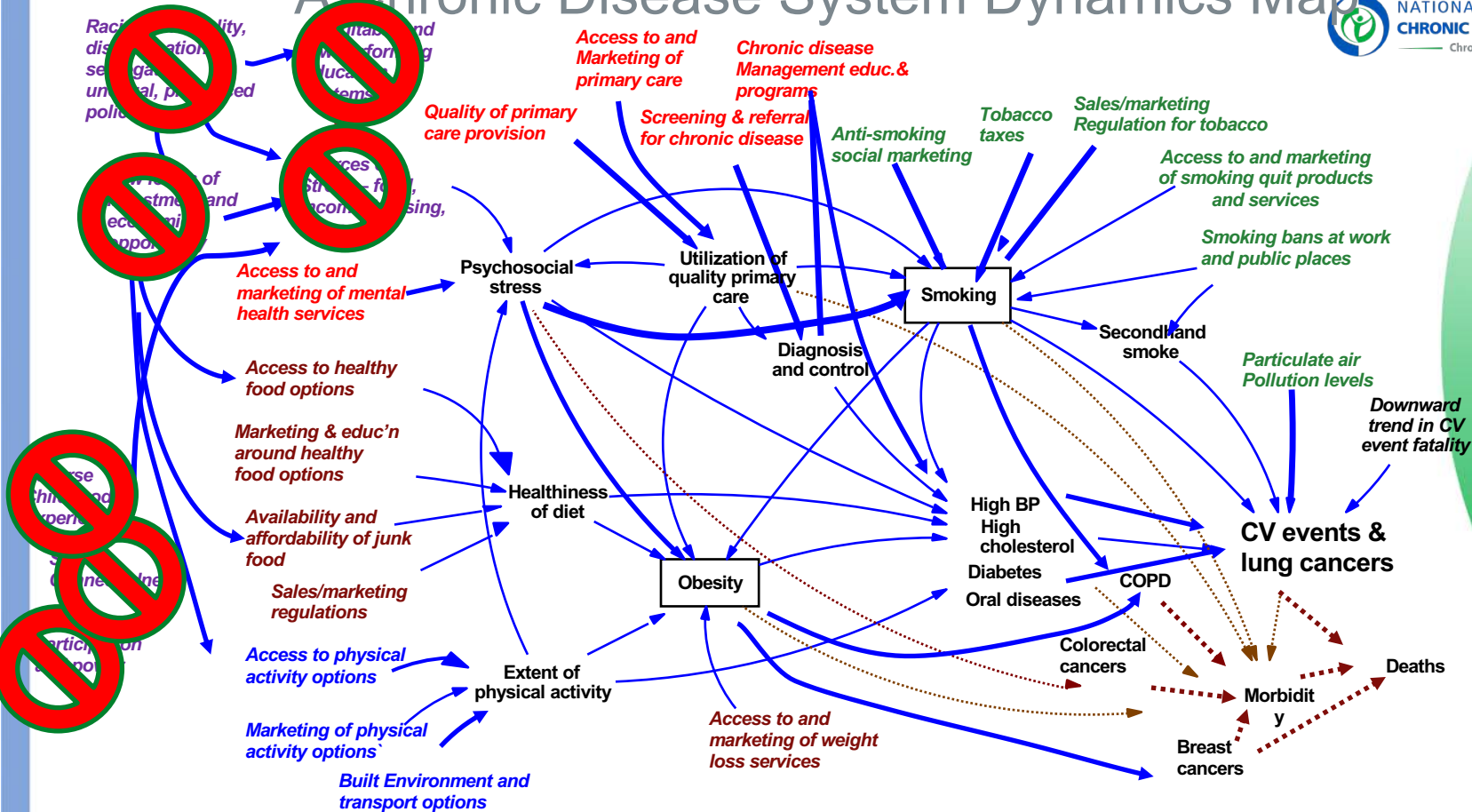
A Chronic Disease System Dynamics Map



A Chronic Disease System Dynamics Map



NATIONAL ASSOCIATION OF
CHRONIC DISEASE DIRECTORS
Chronic Disease Academy



Five Domains of the Social Determinants of Health

Healthy People 2020

View content related to:

All Domains



Economic Stability

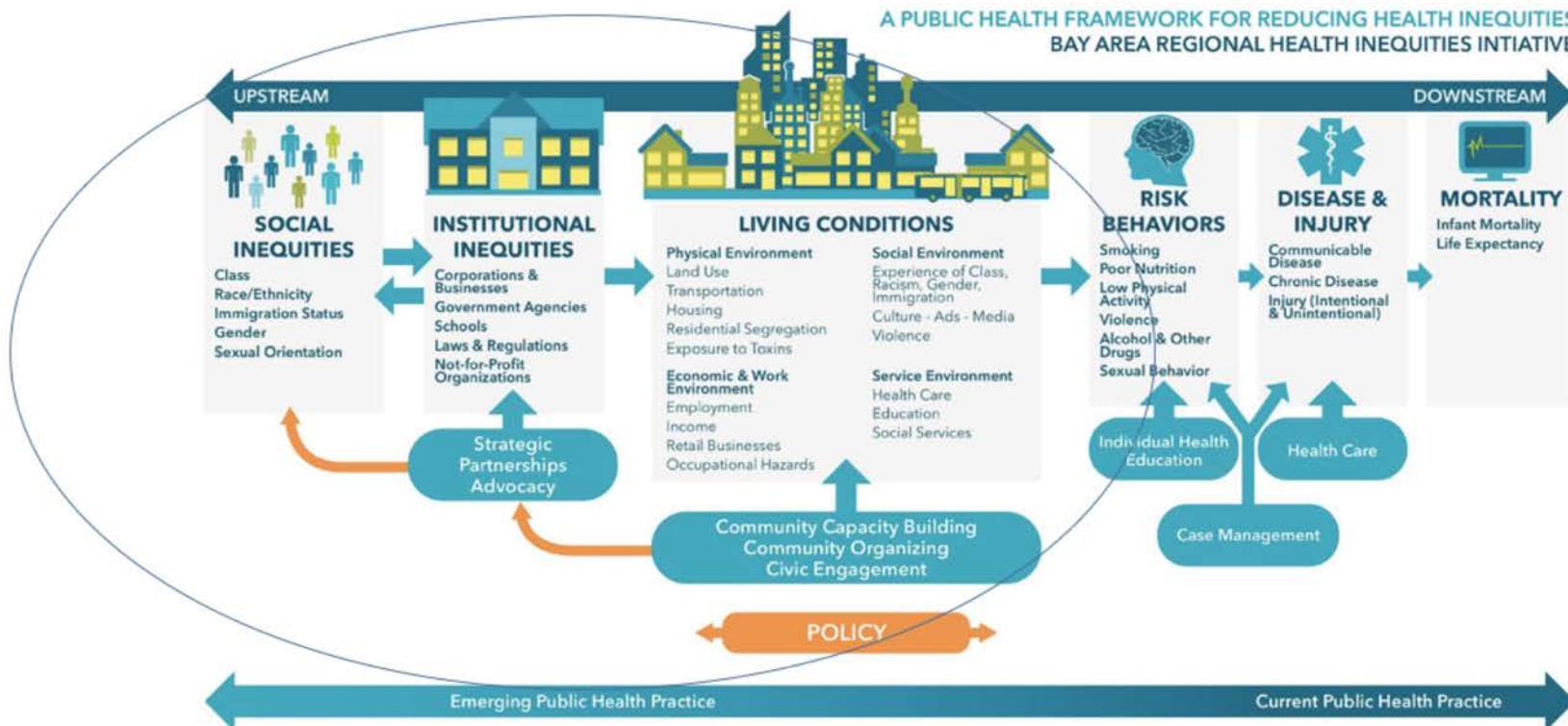
Education

**Health and Health
Care**

**Neighborhood and
Built Environment**

**Social and
Community Context**

BARHI Model





BHMC Pilot: Qualitative Data Analysis

After the initial quantitative data analyses, the BHMC Pilot team conducted a baseline **Rapid Needs Assessment (RNA) via scripted semi-structured interviews** of DoD (unit leaders, retention non-commissioned officers, and recruiters) and non-DoD stakeholders (community health organizations, state and local health departments, employment assistance programs, and local healthcare providers). **The RNA examined available resources and existing needs** and used these qualitative data to identify six themes of the current gaps in optimizing readiness, resiliency, and well-being.

The 6 Themes

**Transportation and
Geographic Dispersion**

**Mental Healthcare and
Substance Abuse:**
Access and Stigma

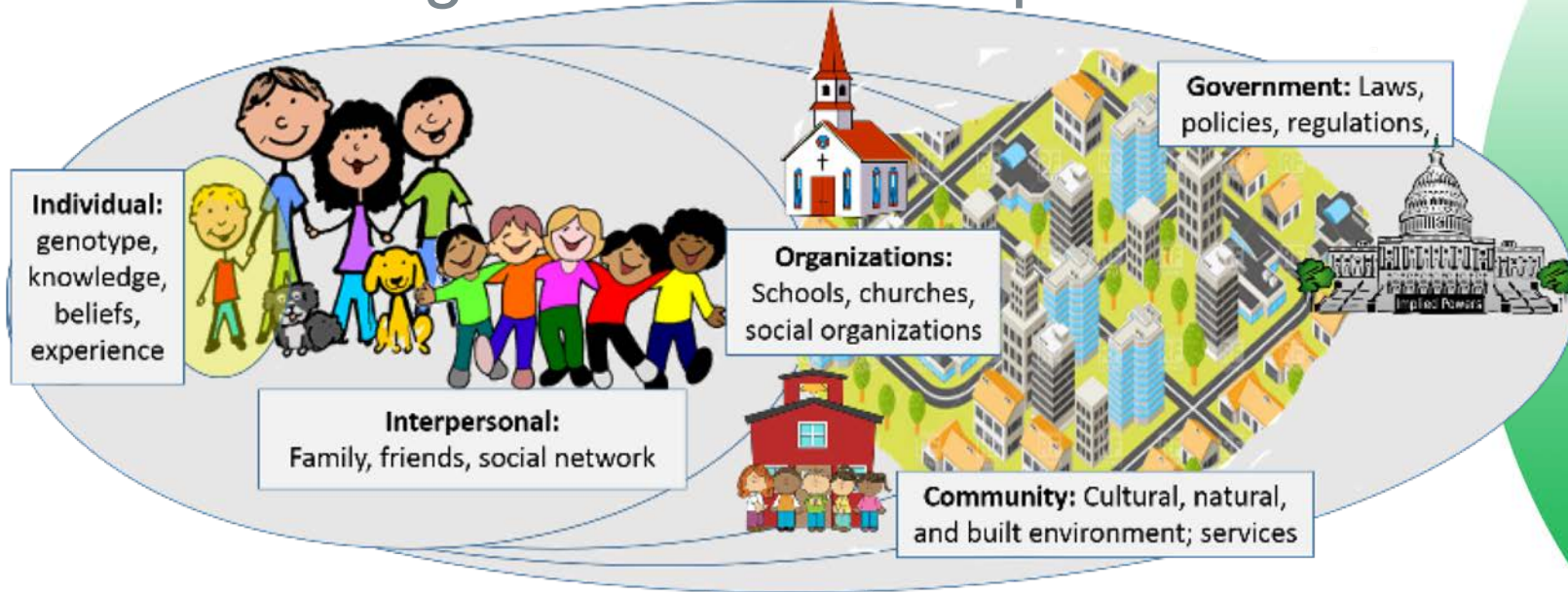
Family Supports:
Childcare, Spousal
Employment, Higher
Education
Opportunities, and
Housing

**Communication and
Coordination Between
DoD and Community
Resources**

Jobs and Employment:
Shifting Location,
Employer Expectations,
Financial Literacy

**Adverse Health
Behaviors:** Nutrition,
Obesity, Chronic
Conditions, and Tobacco
Use

Socio-ecological model - how public health thinks

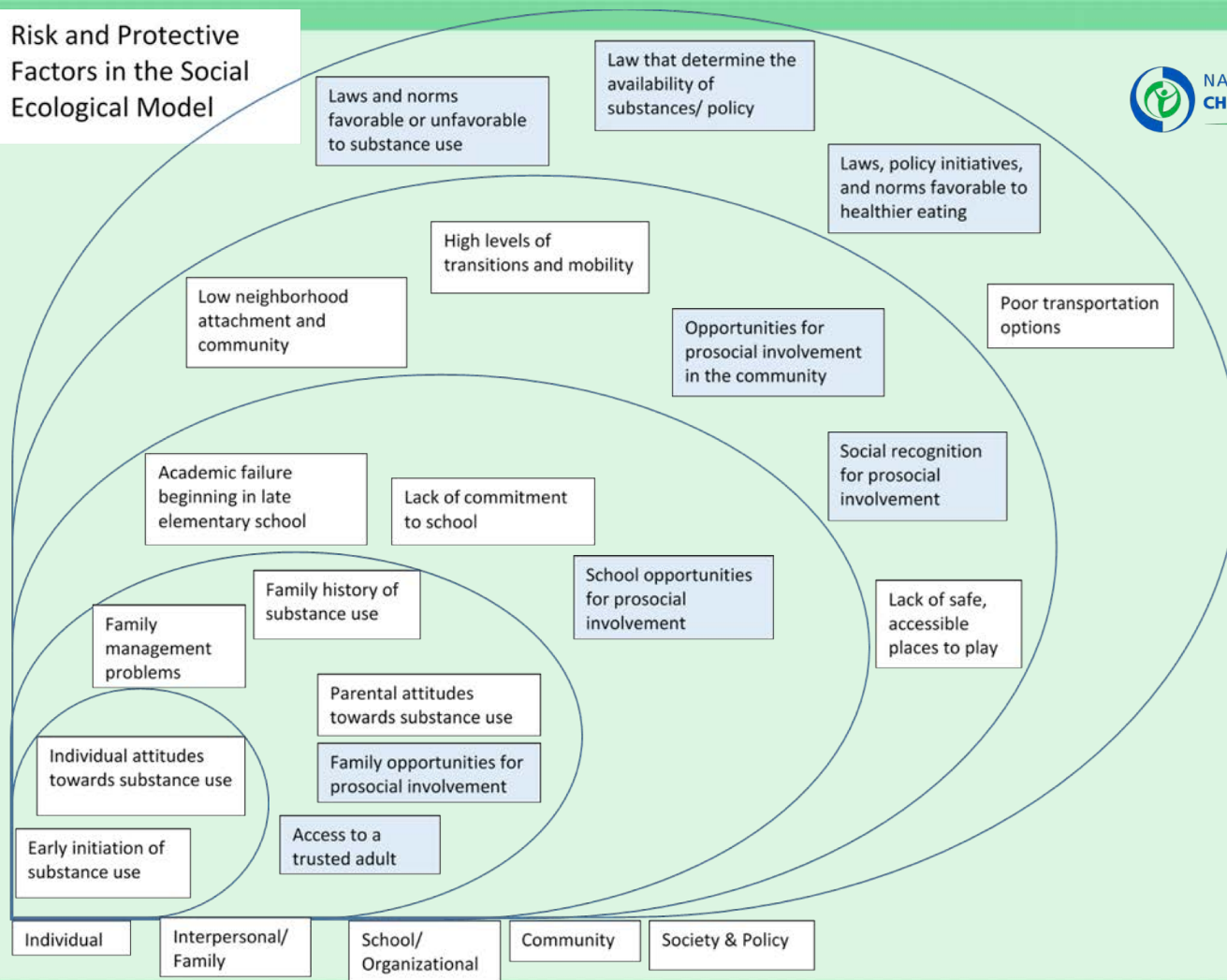


Source: Wayne W. LaMorte, MD, PhD, MPH, Boston University School of Public Health

http://sphweb.bumc.bu.edu/otlt/MPH-Modules/QuantCore/PH717_ExposureAssessment/PH717_ExposureAssessment2.html

Date accessed: 7/25/2018. Date last modified: January 30, 2018.

Risk and Protective Factors in the Social Ecological Model



What Public Health Does Well

- Modeling disease processes
- Scientific rigor
- Collect and analyze data
- Acting as a trusted partner
- Leveraging resources

Use these strengths to find a way forward...

Disruptive Public Health 3.0 Practices

- Develop new projects, programs or public health practices
- Leverage Public Health expertise
- Using resources to grease or leverage action in other sectors
- Taking a more muscular posture on existing incentives to manufacturing illness

Public Health 3.0 - Potential Projects

- Re-entry systems with wrap-around services for incarcerated individuals
- Build work-based learning systems for those changing jobs or entering labor force
- Build systems of prescription and referral from health care to social services
- Build accessible support and training systems for 16-25 yr olds on life-skills, positive relationships, and employment training and matching
- Advocate for policies that require health impact assessments in housing stock, education systems, community plans, local transportation systems, and human service systems
- School district partnerships to assure health services to needy children, especially in areas of low educational attainment
- Build systems of affordable community banking and investment

Public Health 3.0 – Leverage Public Health Expertise

- Public health approach to community policing and safety
- Nurse-family partnership model for parents of school-aged children
- Design changes to street-scapes that encourage physical activity and active transportation
- Communities that Care model for community action
- Rotary Club-styled community health coalitions
- Hot-spotting pockets of need by block or census tract

Public Health 3.0 – Resources to Grease the Skids

- Grants to schools to adopt healthier vending options
- Financial assistance and training to improve food prep in child care
- Funding for operation costs of community health coalitions
- Assisting states in public health transformation and funding initiatives
- Accessing the population health potential of EHRs
- Building resource and referral inventories for social services
- Funding for streamlining applications for social services

Public Health 3.0 – More Muscular Advocacy

- ✓ Raising tobacco taxes
- ✓ Looking at the food system critically - ag subsidies, portion sizes, sugar content
- ✓ Investments in pre-distribution
- ✓ Mass-transit, housing density, active transportation, design-based zoning
- ✓ Studies on guns, screen time, communications and health
- ✓ Mass communication on the social determinants of health
- ✓ Mass communication/ ROI studies on benefits of Universal Pre-K, Basic income, paid family leave

The Podcast Series

- Exploring the social determinants of health and the public health role
- Increasing popular understanding of the social determinants
- Community action, civic engagement, and mobilization strategies
- The Social Genome Project - a role for public health?
- ACES and their role in chronic disease
- Community development and health impact assessments
- Security enhancements - food security, income security and paid family leave