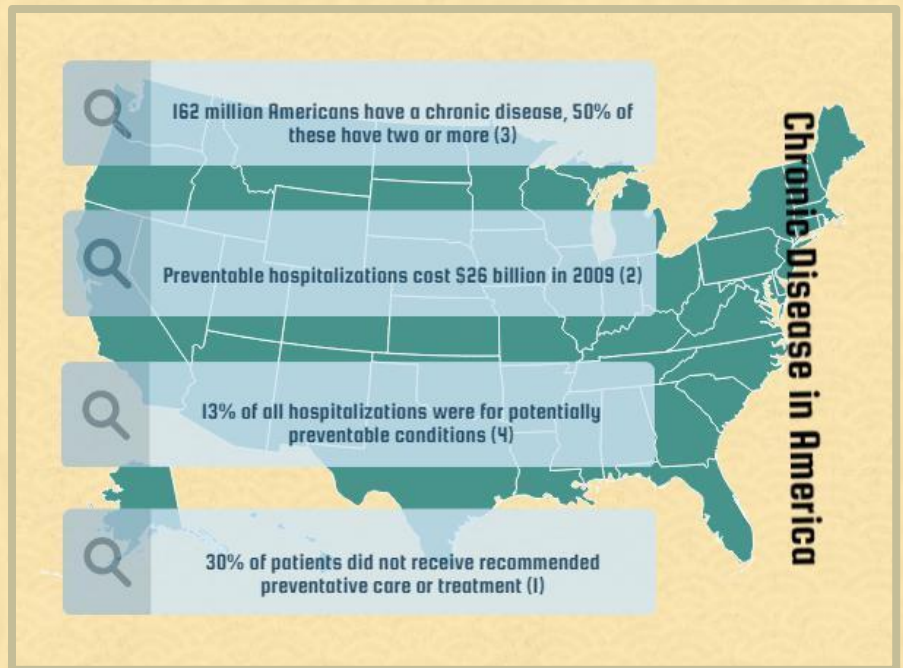


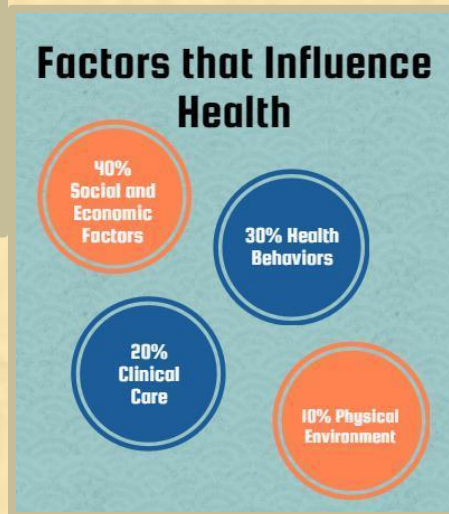
Linking Chronic Disease Prevention and Community Benefit: Improving Population Health



The Triple Aim Approach



Community benefits are programs or activities that provide treatment or promote health as a response to identified community needs.



Community health needs assessments must take into account input from persons who represent the broad interest of the community including those with expertise in public health⁵.

Community Benefit

The Promotion of health for a class of persons sufficiently large so the community as a whole benefits



Triple Aim+Community Benefit =

A successful care management program includes education combined with treatment interventions



Improved experience of care

Reducing per capita costs of health care

Disease management programs that decreased hospitalizations admissions by as little as 10% covered associated program costs



ROI applied to chronic disease management programs has been estimated at 1.8 (3)



Improving the health of populations

State and local public health policy decisions help inform the implementation of Community Benefit initiatives.



NATIONAL ASSOCIATION OF
CHRONIC DISEASE DIRECTORS
Promoting Health. Preventing Disease.

GENERATE, EDUCATE, ACTIVATE, RESPOND

Wisconsin - Population Health Institute



1 Assessing and Improving Community Health

- State, local health departments and non-profit hospitals work together
- Assess local needs and discover what is most important to communities across the state
- Determine key health improvement priorities

<http://www.hshs.org/Community-Benefit.aspx> and <http://www.improvingwihealth.org/>

Lancaster General - Pennsylvania

2 Delivering on the promise of a healthier future

- Lancaster General Community Benefit has a leadership role in Pennsylvania's Cancer Coalition population level initiatives.
- Health Systems involved in Statewide planning inform decisions that work for both local and statewide partners.



<http://www.lancastergeneralhealth.org/LGH/About-Lancaster-General-Health/Community-Health-Involvement/CBU/CBU/Community-Benefit-Update.aspx>

Footnotes:

- (1) <http://www.countyhealthrankings.org/our-approach/health-factors/quality-care>.
- (2) Clancy C, Munier W, Brady J, et al. 2012 *National healthcare quality report*. Rockville, MD: Agency for Healthcare Research and Quality (AHRQ); 2013.
- (3) Pappas G, Hadden WC, Kozak LJ, Fisher GF. Potentially avoidable hospitalizations: Inequalities in rates between US socioeconomic groups. *Am J Public Health*. 1997;87:811-816.
- (4) Nationwide Frequency and Costs of Potentially Preventable Hospitalizations, 2006 *H. Joanna Jiang, Ph.D., C. Allison Russo, M.P.H., and Marguerite L. Barrett, M.S.* Agency for Healthcare Research and Quality, May 1, 2009
- (5) <https://www.chausa.org/communitybenefit/community-benefit>.

References

NACCHO Community Benefit One Pager : MAPP and Non-Profit Hospitals: Leveraging Community Benefit for Community Health Improvement http://archived.naccho.org/topics/infrastructure/mapp/framework/clearinghouse/upload/factsheet_mapp-communitybenefit.pdf

RWJF's Health Policy Snapshot: "What's new with community benefit?" <http://www.rwjf.org/en/library/research/2012/10/what-s-new-with-community-benefit.html>

Health Affairs "Evolving Hospital Community Benefit Could Be the Next Big Development in Health Philanthropy" article <http://healthaffairs.org/blog/2016/06/08/evolving-hospital-community-benefit-could-be-the-next-big-development-in-health-philanthropy/>

IHI Triple Aim Overview: <http://www.ihl.org/engage/initiatives/tripleaim/pages/default.aspx>

"The Triple Aim: Care, Health, and Cost": <http://content.healthaffairs.org/content/27/3/759.full>

"The Triple Aim Journey: Improving Population Health and Patients' Experience of Care, While Reducing Costs": <http://www.commonwealthfund.org/publications/case-studies/2010/jul/triple-aim-improving-population-health>



NATIONAL ASSOCIATION OF
CHRONIC DISEASE DIRECTORS

Promoting Health. Preventing Disease.

GENERATE, EDUCATE, ACTIVATE, RESPOND