

INTRODUCTION

In collaboration with the Centers for Disease Control and Prevention (CDC) Division of Cancer Prevention and Control (DCPC), the National Association of Chronic Disease Directors (NACDD) is utilizing a participatory partnership approach to improve future surveillance of shared decision-making for breast, prostate, and lung cancer screening.

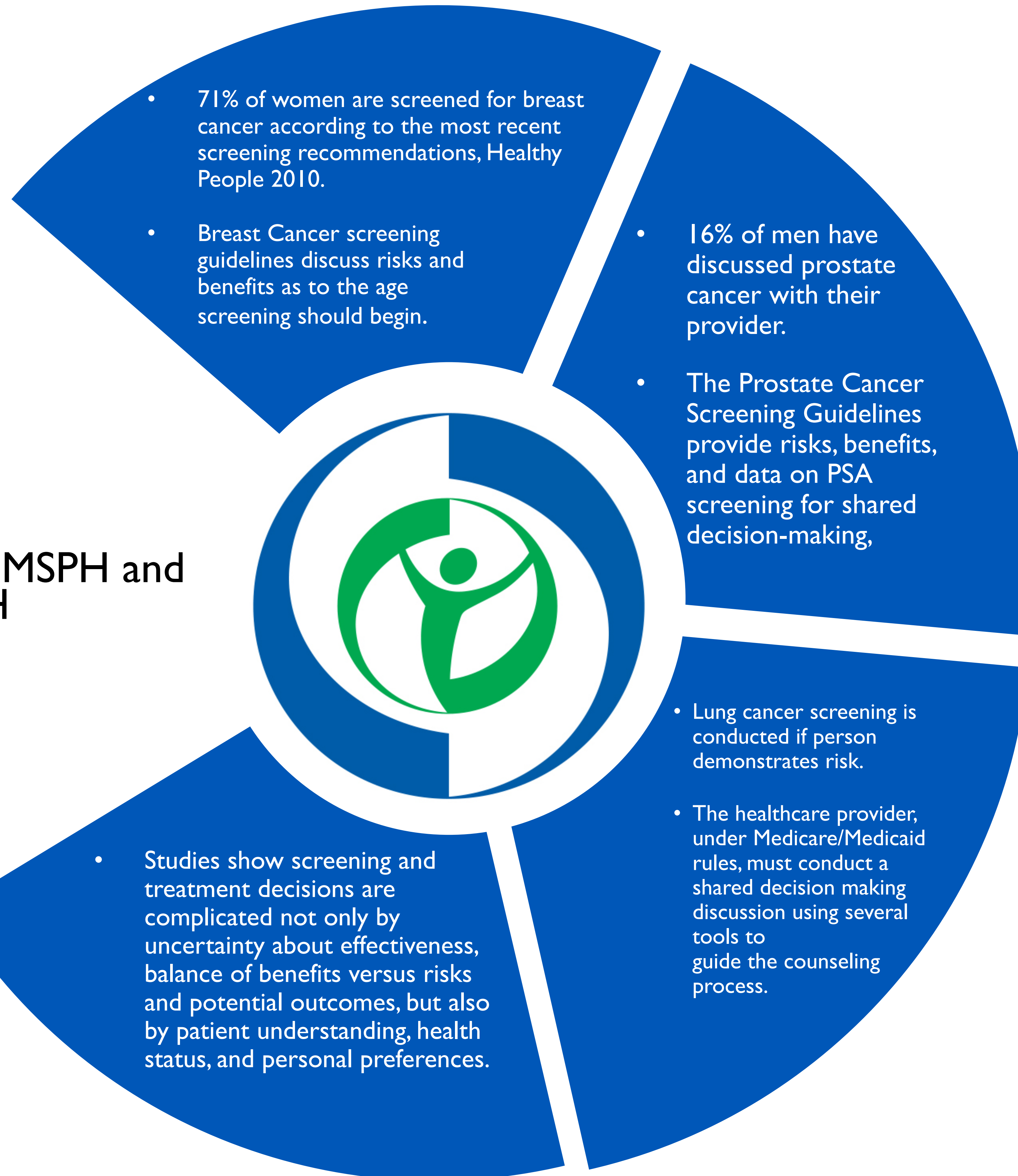
The partners will form 3 work groups--breast, prostate, and lung cancer--to deliberate and come to consensus by developing a conceptual framework for each cancer.

Consultants: Randy Schwartz, MSPH and Adeline Yerkes, MPH

IMPACT

Provides tools for public health professionals to assess the utilization of decision making by health care providers.

Surveillance of shared decision-making for prostate, breast, and lung cancer



OBJECTIVES

NACDD will provide a conceptual framework to improve future surveillance of shared decision making for breast, prostate, and lung cancer screening.



OUTLOOK

Framework for breast, lung, and prostate cancer describes how surveillance information can be used for planning interventions at the national and local level and increases integration of state-of-the-art technology into data collection and information systems.